

Gamma-Taxilin Antibody

Rabbit Polyclonal

Antigen Affinity Purified Protein ID NP_060830.2
Catalog No. A304-043A-M GeneID 55787
Lot No. A304-043A-M-1



APPLICATIONS WB, IP
SPECIES REACTIVITY Human, Mouse
AMOUNT 100 µl (10 blots)
CONCENTRATION 40 µg/ml
STORAGE/SHELF LIFE 2 - 8° C / 1 year from date of receipt
PHYSICAL STATE Liquid
BUFFER Tris-buffered Saline containing 0.1% BSA and 0.09% Sodium Azide
ISOTYPE IgG
ORIGIN USA
PRODUCTION PROCEDURES Antibody was affinity purified using an epitope specific to Gamma-Taxilin immobilized on solid support.

The epitope recognized by A304-043A-M maps to a region between residue 478 to 528 of human Taxilin Gamma using the numbering given in entry NP_060830.2 (GeneID 55787). The epitopes for anti-Gamma Taxilin antibodies A304-042A and A304-043A-M are in close proximity, but do not overlap.

APPLICATIONS Centrifuge tube to remove product from lid. Optimal working dilutions should be determined experimentally by the investigator. Prepare working dilution immediately before use.

Western Blot 1:1000

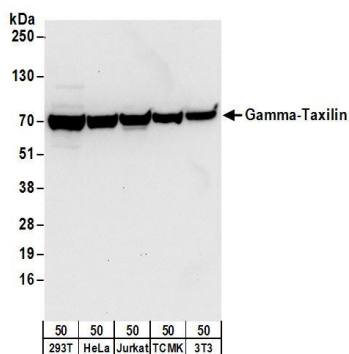
Immunoprecipitation The antibody contained within A304-043A-M has been qualified for use in immunoprecipitation; however, we recommend using the alternative formulation of this antibody found as product A304-043A.

APPLICATION NOTES Western blot of immunoprecipitates performed using Normal Pig Serum (Cat. No. S100-020), Goat anti-Rabbit Light Chain HRP Conjugate (Cat. No. A120-113P) and 4-20% SDS-PAGE (link to IP-western blot protocol in Additional Info section below).

Western blot of lysates performed using standard western blot reagents and 4-20% SDS-PAGE.

ADDITIONAL INFO <https://www.bethyl.com/product/A304-043A-M>
Use the link above to view SDS, a current list of citations, and other product specific information.
IP-western blot protocol: https://www.bethyl.com/content/protocol_IP_WB

This document certifies that this product has met all of the quality control standards defined by Bethyl Laboratories, Inc.
Eric McIntush, PhD | Chief Scientific Officer Date: June 21, 2019



Detection of human and mouse Gamma-Taxilin by western blot. *Samples:* Whole cell lysate (50 µg) from HEK293T, HeLa, Jurkat, mouse TCMK-1, and mouse NIH 3T3 cells. *Antibody:* Affinity purified rabbit anti-Gamma-Taxilin antibody A304-043A-M used at 1:1000. *Detection:* Chemiluminescence with an exposure time of 10 seconds.