

Cyclin M3 Antibody

Rabbit Polyclonal

Antigen Affinity Purified

Protein ID NP_060093.3

Catalog No. A304-066A-T

GeneID 26505

Lot No. A304-066A-T-1

APPLICATIONS WB, IP

SPECIES REACTIVITY Human

AMOUNT 10 µl

CONCENTRATION 1000 µg/ml

STORAGE/SHELF LIFE 2 – 8°C / 1 year from date of receipt

PHYSICAL STATE Liquid

BUFFER Tris-citrate/phosphate buffer, pH 7 to 8 containing 0.09% Sodium Azide

ISOTYPE IgG

ORIGIN USA

PRODUCTION PROCEDURES Antibody was affinity purified using an epitope specific to Cyclin M3 immobilized on solid support.

The epitope recognized by A304-066A-T maps to a region between residue 657 to 707 of human Cyclin M3 using the numbering given in entry NP_060093.3 (GeneID 26505).

APPLICATIONS Centrifuge tube to remove product from lid. Optimal working dilutions should be determined experimentally by the investigator. Prepare working dilution immediately before use.

Western Blot 1:2,000 – 1:10,000

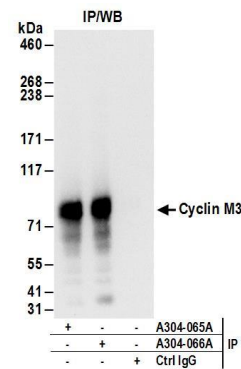
Immunoprecipitation 2 – 10 µg/mg lysate

ADDITIONAL INFO <https://www.bethyl.com/product/A304-066A-T>

Use the link above to view SDS, a current list of citations, and other product specific information.

IP-western blot protocol: https://www.bethyl.com/content/protocol_IP_WB

This document certifies that this product has met all of the quality control standards defined by Bethyl Laboratories, Inc.
Michael Spencer, PhD Date: June 6, 2022



Detection of human Cyclin M3 by western blot of immunoprecipitates. *Samples:* Whole cell lysate (1 mg for IP; 20% of IP loaded) from 293T cells. *Antibodies:* Affinity purified rabbit anti-Cyclin M3 antibody A304-066A (lot A304-066A-1) used for IP at 6 µg/mg lysate. Cyclin M3 was also immunoprecipitated by rabbit anti-Cyclin M3 antibody A304-065A. For blotting immunoprecipitated Cyclin M3, A304-066A was used at 1 µg/ml. *Detection:* Chemiluminescence with an exposure time of 3 seconds.