

UBA6 Antibody

Rabbit Polyclonal

Antigen Affinity Purified

Protein ID NP_060697.4

Catalog No. A304-106A

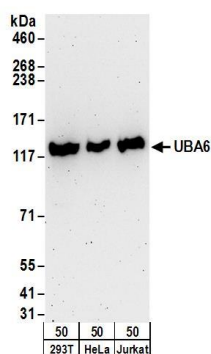
GeneID 55236

Lot No. A304-106A-1

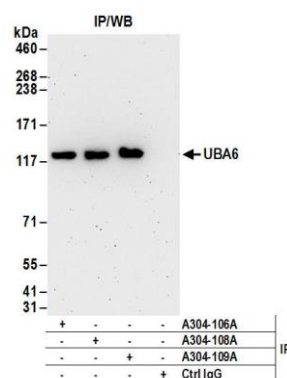


APPLICATIONS	WB, IP
SPECIES REACTIVITY	Human
AMOUNT	100 μ l
CONCENTRATION	1000 μ g/ml
STORAGE/SHELF LIFE	2 – 8° C / 1 year from date of receipt
PHYSICAL STATE	Liquid
BUFFER	Tris-citrate/phosphate buffer, pH 7 to 8 containing 0.09% Sodium Azide
ISOTYPE	IgG
ORIGIN	USA
PRODUCTION PROCEDURES	Antibody was affinity purified using an epitope specific to UBA6 immobilized on solid support. The epitope recognized by A304-106A maps to a region between residue 1 to 50 of human Ubiquitin-Like Modifier Activating Enzyme 6 using the numbering given in entry NP_060697.4 (GeneID 55236). Antibody concentration was determined by extinction coefficient: absorbance at 280 nm of 1.4 equals 1.0 mg of IgG.
APPLICATIONS	Centrifuge tube to remove product from lid. Optimal working dilutions should be determined experimentally by the investigator. Prepare working dilution immediately before use. Western Blot 1:2,000 – 1:10,000 Immunoprecipitation 2 – 10 μ g/mg lysate
APPLICATION NOTES	Western blot of immunoprecipitates performed using Normal Pig Serum (Cat. No. S100-020), Goat anti-Rabbit Light Chain HRP Conjugate (Cat. No. A120-113P) and 4-8% SDS-PAGE (link to IP-western blot protocol in Additional Info section below). Western blot of lysates performed using standard western blot reagents and 4-8% SDS-PAGE.
ADDITIONAL INFO	https://www.bethyl.com/product/A304-106A Use the link above to view SDS, a current list of citations, and other product specific information. IP-western blot protocol: https://www.bethyl.com/content/protocol_IP_WB

This document certifies that this product has met all of the quality control standards defined by Bethyl Laboratories, Inc.
Eric McIntush, PhD | Chief Scientific Officer Date: June 21, 2019



Detection of human UBA6 by western blot. *Samples:* Whole cell lysate (50 µg) from 293T, HeLa, and Jurkat cells. *Antibodies:* Affinity purified rabbit anti-UBA6 antibody A304-106A (lot A304-106A-1) used for WB at 0.1 µg/ml. *Detection:* Chemiluminescence with an exposure time of 3 minutes.



Detection of human UBA6 by western blot of immunoprecipitates. *Samples:* Whole cell lysate (1 mg for IP; 20% of IP loaded) from 293T cells. *Antibodies:* Affinity purified rabbit anti-UBA6 antibody A304-106A (lot A304-106A-1) used for IP at 6 µg/mg lysate. UBA6 was also immunoprecipitated by rabbit anti-UBA6 antibodies A304-108A and A304-109A. For blotting immunoprecipitated UBA6, A304-106A was used at 0.1 µg/ml. *Detection:* Chemiluminescence with an exposure time of 3 minutes.