

UBA6 Antibody

Rabbit Polyclonal

Antigen Affinity Purified Protein ID NP_060697.4

Catalog No. A304-107A-T GenelD 55236

Lot No. A304-107A-T-1

APPLICATIONS	WB
SPECIES REACTIVITY	Human, Mouse
AMOUNT	10 µl
CONCENTRATION	1000 µg/ml
STORAGE/SHELF LIFE	2 – 8°C / 1 year from date of receipt
PHYSICAL STATE	Liquid
BUFFER	Tris-citrate/phosphate buffer, pH 7 to 8 containing 0.09% Sodium Azide
ISOTYPE	IgG
ORIGIN	USA
PRODUCTION PROCEDURES	Antibody was affinity purified using an epitope specific to UBA6 immobilized on solid support.

The epitope recognized by A304-107A-T maps to a region between residue 200 to 250 of human Ubiquitin-Like Modifier Activating Enzyme 6 using the numbering given in entry NP_060697.4 (GenelD 55236).

APPLICATIONS Centrifuge tube to remove product from lid. Optimal working dilutions should be determined experimentally by the investigator. Prepare working dilution immediately before use.

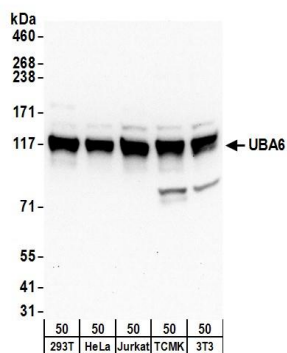
Western Blot 1:1,000 – 1:5,000

Immunoprecipitation Not recommended

ADDITIONAL INFO <https://www.bethyl.com/product/A304-107A-T>

Use the link above to view SDS, a current list of citations, and other product specific information.

This document certifies that this product has met all of the quality control standards defined by Bethyl Laboratories, Inc.
Michael Spencer, PhD Date: June 6, 2022

**Detection of human and mouse UBA6 by western blot.**

Samples: Whole cell lysate (50 µg) from 293T, HeLa, Jurkat, mouse TCMK-1, and mouse NIH 3T3 cells. *Antibodies:* Affinity purified rabbit anti-UBA6 antibody A304-107A (lot A304-107A-1) used for WB at 0.4 µg/ml. *Detection:* Chemiluminescence with an exposure time of 10 seconds.