

c-Myb Antibody

Rabbit Polyclonal

Antigen Affinity Purified

Protein ID NP_005366.2

Catalog No. A304-135A

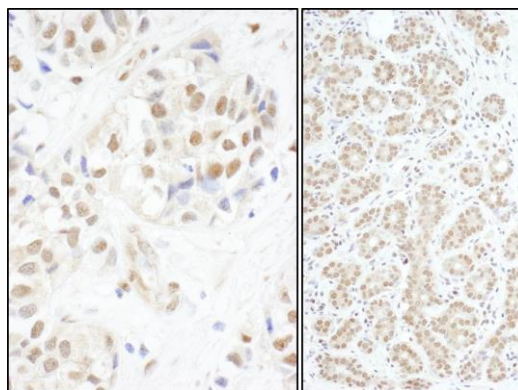
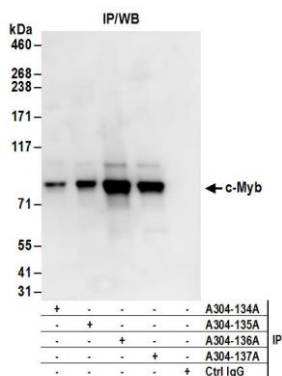
GeneID 4602

Lot No. A304-135A-1



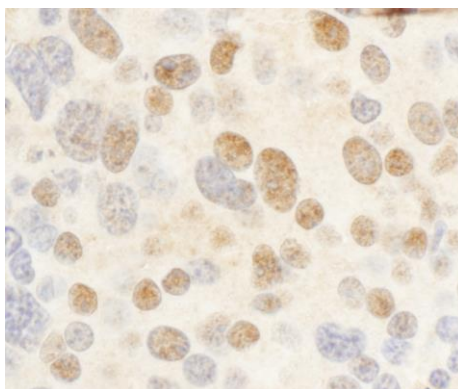
APPLICATIONS	IP, IHC
SPECIES REACTIVITY	Human, Mouse
PRESUMED REACTIVITY	Based on 100% sequence identity, this antibody is predicted to react with Bovine
AMOUNT	100 µl
CONCENTRATION	1000 µg/ml
STORAGE/SHELF LIFE	2 - 8° C / 1 year from date of receipt
PHYSICAL STATE	Liquid
BUFFER	Tris-citrate/phosphate buffer, pH 7 to 8 containing 0.09% Sodium Azide
ISOTYPE	IgG
ORIGIN	USA
PRODUCTION PROCEDURES	<p>Antibody was affinity purified using an epitope specific to c-Myb immobilized on solid support.</p> <p>The epitope recognized by A304-135A maps to a region between residue 1 to 50 of human V-myb Myeloblastosis Viral Oncogene Homolog using the numbering given in entry NP_005366.2 (GeneID 4602).</p> <p>Antibody concentration was determined by extinction coefficient: absorbance at 280 nm of 1.4 equals 1.0 mg of IgG.</p>
APPLICATIONS	<p>Centrifuge tube to remove product from lid. Optimal working dilutions should be determined experimentally by the investigator. Prepare working dilution immediately before use.</p> <p>Western Blot Not recommended. Use rabbit anti-c-Myb antibody A304-138A.</p> <p>Immunoprecipitation 2 - 10 µg/mg lysate</p> <p>Immunohistochemistry 1:1,000 - 1:5,000. Epitope retrieval with citrate buffer pH 6.0 is recommended for FFPE tissue sections.</p>
APPLICATION NOTES	Western blot of immunoprecipitates performed using Normal Pig Serum (Cat. No. S100-020), Goat anti-Rabbit Light Chain HRP Conjugate (Cat. No. A120-113P) and 4-8% SDS-PAGE (link to IP-western blot protocol in Additional Info section below).
IHC HUMAN CONTROLS	Breast Carcinoma, Ovarian Carcinoma, Salivary Gland
IHC MOUSE CONTROLS	Renal Cell Carcinoma
ADDITIONAL INFO	<p>https://www.bethyl.com/product/A304-135A</p> <p>Use the link above to view SDS, a current list of citations, and other product specific information. IP-western blot protocol: https://www.bethyl.com/content/protocol_IP_WB</p>

This document certifies that this product has met all of the quality control standards defined by Bethyl Laboratories, Inc.
Eric McIntush, PhD | Chief Scientific Officer Date: June 21, 2019



Detection of human c-Myb by western blot of immunoprecipitates. *Samples:* Whole cell lysate (1 mg for IP; 20% of IP loaded) from MOLT-4 cells. *Antibodies:* Affinity purified rabbit anti-c-Myb antibody A304-135A (lot A304-135A-1) used for IP at 6 µg/mg lysate. c-Myb was also immunoprecipitated by rabbit anti-c-Myb antibodies A304-134A, A304-136A and A304-137A. For blotting immunoprecipitated c-Myb, A304-138A was used at 1 µg/ml. *Detection:* Chemiluminescence with an exposure time of 10 seconds.

Detection of human c-Myb by immunohistochemistry. *Sample:* FFPE section of human breast carcinoma (left) and salivary gland (right). *Antibody:* Affinity purified rabbit anti- c-Myb antibody (Cat. No. A304-135A Lot1) used at a dilution of 1:5,000 (0.2µg/ml) and 1:1,000 (1µg/ml). *Detection:* DAB



Detection of mouse c-Myb by immunohistochemistry. *Sample:* FFPE section of mouse renal cell carcinoma. *Antibody:* Affinity purified rabbit anti- c-Myb antibody (Cat. No. A304-135A Lot1) used at a dilution of 1:1,000 (1 µg/ml). *Detection:* DAB