

PSF1 Antibody

Rabbit Polyclonal

Antigen Affinity Purified

Protein ID NP_066545.3

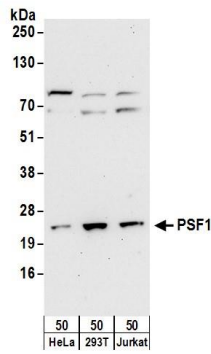
Catalog No. A304-170A

GeneID 9837

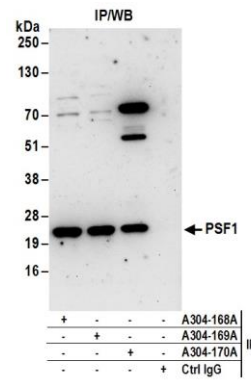
Lot No. A304-170A-1



APPLICATIONS	WB, IP				
SPECIES REACTIVITY	Human				
ISOTYPE	IgG				
AMOUNT	100 µl at 1 mg/ml				
STORAGE/SHELF LIFE	2 - 8° C / 1 year from date of receipt				
PHYSICAL STATE	Liquid				
BUFFER	Tris-citrate/phosphate buffer, pH 7 to 8 containing 0.09% Sodium Azide				
ORIGIN	USA				
PRODUCTION PROCEDURES	<p>Antibody was affinity purified using an epitope specific to PSF1 immobilized on solid support.</p> <p>The epitope recognized by A304-170A maps to a region between residue 146 to 196 of human GINS Complex Subunit 1 using the numbering given in entry NP_066545.3 (GeneID 9837).</p> <p>Antibody concentration was determined by extinction coefficient: absorbance at 280 nm of 1.4 equals 1.0 mg of IgG.</p>				
APPLICATIONS	<p>Centrifuge tube to remove product from lid. Optimal working dilutions should be determined experimentally by the investigator. Prepare working dilution immediately before use.</p> <table><tr><td>Western Blot</td><td>1:1,000 - 1:5,000</td></tr><tr><td>Immunoprecipitation</td><td>2 - 10 µg/mg lysate</td></tr></table>	Western Blot	1:1,000 - 1:5,000	Immunoprecipitation	2 - 10 µg/mg lysate
Western Blot	1:1,000 - 1:5,000				
Immunoprecipitation	2 - 10 µg/mg lysate				
APPLICATION NOTES	<p>Western blot of immunoprecipitates performed using ReliaBLOT® Reagents (Cat. No. WB120) and 4-20% SDS-PAGE.</p> <p>Western blot of lysates performed using standard western blot reagents and 4-20% SDS-PAGE.</p>				
ADDITIONAL INFO	<p>http://www.bethyl.com/product/A304-170A</p> <p>Use the link above to view SDS, a current list of citations, and other product specific information.</p>				



Detection of human PSF1 by western blot. *Samples:* Whole cell lysate (50 µg) from HeLa, 293T, and Jurkat cells. *Antibodies:* Affinity purified rabbit anti-PSF1 antibody A304-170A (lot A304-170A-1) used for WB at 0.4 µg/ml. *Detection:* Chemiluminescence with an exposure time of 30 seconds.



Detection of human PSF1 by western blot of immunoprecipitates. *Samples:* Whole cell lysate (1 mg for IP; 20% of IP loaded) from HeLa cells. *Antibodies:* Affinity purified rabbit anti-PSF1 antibody A304-170A (lot A304-170A-1) used for IP at 6 µg/mg lysate. PSF1 was also immunoprecipitated by rabbit anti-PSF1 antibodies A304-168A and A304-169A. For blotting immunoprecipitated PSF1, A304-170A was used at 1 µg/ml. *Detection:* Chemiluminescence with an exposure time of 30 seconds.