

# EZH2 Antibody

Rabbit Polyclonal

Antigen Affinity Purified	RefSeq ID	CAA64955.1
Catalog No. A304-197A	Uniprot ID	Q15910
Lot No. A304-197A-2	GeneID	2146

---

<b>APPLICATIONS</b>	WB, IP
<b>SPECIES REACTIVITY</b>	Human, Mouse
<b>PRESUMED REACTIVITY</b>	Based on 100% sequence identity, this antibody is predicted to react with Zebrafish, <i>X. laevis</i> and <i>X. tropicalis</i>
<b>AMOUNT</b>	100 µl
<b>CONCENTRATION</b>	1000 µg/ml
<b>STORAGE/SHELF LIFE</b>	2 – 8°C / 1 year from date of receipt
<b>PHYSICAL STATE</b>	Liquid
<b>BUFFER</b>	Tris-citrate/phosphate buffer, pH 7 to 8 containing 0.09% Sodium Azide
<b>ISOTYPE</b>	IgG
<b>ORIGIN</b>	USA
<b>PRODUCTION PROCEDURES</b>	Antibody was affinity purified using an epitope specific to EZH2 immobilized on solid support.

The epitope recognized by A304-197A maps to a region between residue 696 to 746 of human Enhancer of Zeste Homolog 2 using the numbering given in entry CAA64955.1 (GeneID 2146).

Antibody concentration was determined by extinction coefficient: absorbance at 280 nm of 1.4 equals 1.0 mg of IgG.

**APPLICATIONS** Centrifuge tube to remove product from lid. Optimal working dilutions should be determined experimentally by the investigator. Prepare working dilution immediately before use.

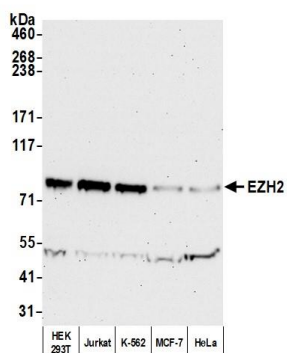
Western Blot 1:500 – 1:2,500

Immunoprecipitation 2 – 10 µg/mg lysate

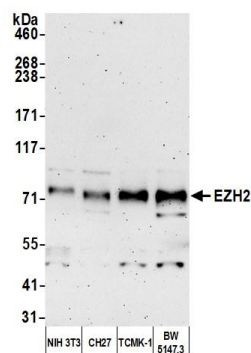
**ADDITIONAL INFO** <https://www.fortislife.com/p/A304-197A>

Use the link above to view SDS, a current list of citations, and other product specific information.

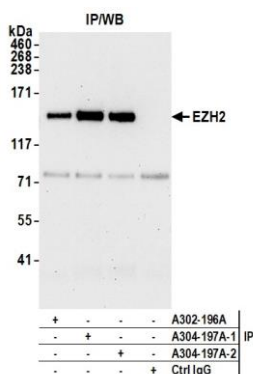
This document certifies that this product has met all of the quality control standards defined by Bethyl Laboratories, Inc.  
Michael Spencer, PhD Date: February 27, 2023



**Detection of human EZH2 by western blot.** *Samples:* Whole cell lysate (50 µg) from HEK293T, Jurkat, K-562, MCF-7, and HeLa cells prepared using NETN lysis buffer. *Antibody:* Affinity purified rabbit anti-EZH2 antibody (A304-197A lot 2) used for WB at 0.4 µg/ml. *Detection:* Chemiluminescence with an exposure time of 75 seconds.



**Detection of mouse EZH2 by western blot.** *Samples:* Whole cell lysate (10 µg) from NIH 3T3, CH27, TCMK-1, and BW5147.3 cells prepared using NETN lysis buffer. *Antibody:* Affinity purified rabbit anti-EZH2 antibody (A304-197A lot 2) used for WB at 0.4 µg/ml. *Detection:* Chemiluminescence with an exposure time of 3 minutes.



**Detection of human EZH2 by western blot of immunoprecipitates.** *Samples:* Whole cell lysate (1.0 mg per IP reaction; 20% of IP loaded) from HEK293T cells prepared using NETN lysis buffer. *Antibodies:* Affinity purified rabbit anti-EZH2 antibody (A304-197A lot 2) used for IP at 6 µg per reaction. EZH2 was also immunoprecipitated by a previous lot of this antibody (A304-197A lot 1) and a second antibody against a different epitope of EZH2 (A302-196A). For blotting immunoprecipitated EZH2, A304-197A was used at 0.1 µg/ml. *Detection:* Chemiluminescence with an exposure time of 30 seconds.