

LMTK2 Antibody

Rabbit Polyclonal

Antigen Affinity Purified

Protein ID NP_055731.2

Catalog No. A304-270A-T

GeneID 22853

Lot No. A304-270A-T-1

APPLICATIONS	WB
SPECIES REACTIVITY	Human
AMOUNT	10 µl
CONCENTRATION	1000 µg/ml
STORAGE/SHELF LIFE	2 – 8°C / 1 year from date of receipt
PHYSICAL STATE	Liquid
BUFFER	Tris-citrate/phosphate buffer, pH 7 to 8 containing 0.09% Sodium Azide
ISOTYPE	IgG
ORIGIN	USA
PRODUCTION PROCEDURES	Antibody was affinity purified using an epitope specific to LMTK2 immobilized on solid support.

The epitope recognized by A304-270A-T maps to a region between residue 675 to 725 of human Lemur Tyrosine Kinase 2 using the numbering given in entry NP_055731.2 (GeneID 22853).

APPLICATIONS Centrifuge tube to remove product from lid. Optimal working dilutions should be determined experimentally by the investigator. Prepare working dilution immediately before use.

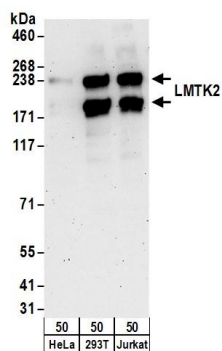
Western Blot 1:2,000 – 1:10,000

Immunoprecipitation Not recommended

ADDITIONAL INFO <https://www.bethyl.com/product/A304-270A-T>

Use the link above to view SDS, a current list of citations, and other product specific information.

This document certifies that this product has met all of the quality control standards defined by Bethyl Laboratories, Inc.
Michael Spencer, PhD Date: June 6, 2022



Detection of human LMTK2 by western blot. *Samples:* Whole cell lysate (50 µg) from HeLa, HEK293T, and Jurkat cells. ***Antibodies:*** Affinity purified rabbit anti-LMTK2 antibody A304-270A (lot A304-270A-1) used for WB at 0.1 µg/ml. ***Detection:*** Chemiluminescence with an exposure time of 3 minutes.