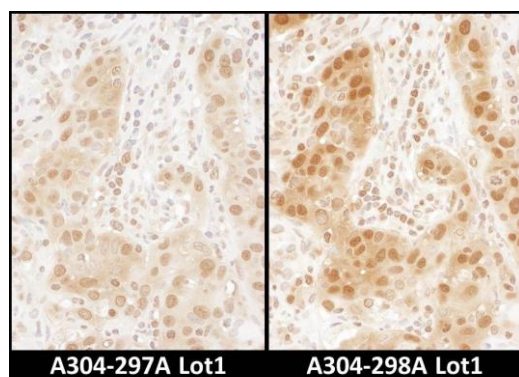
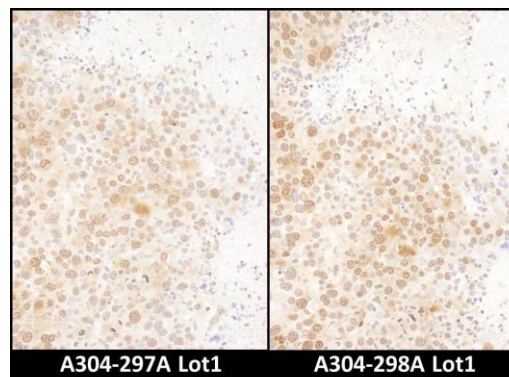


Detection of human and mouse RAN by western blot.
Samples: Whole cell lysate (50 µg) from HeLa, HEK293T, Jurkat, mouse TCMK-1, and mouse NIH 3T3 cells.
Antibodies: Affinity purified rabbit anti-RAN antibody A304-298A (lot A304-298A-1) used for WB at 0.1 µg/ml.
Detection: Chemiluminescence with an exposure time of 30 seconds.

Detection of human RAN by western blot of immunoprecipitates. *Samples:* Whole cell lysate (0.5 or 1.0 mg per IP reaction; 20% of IP loaded) from 293T cells.
Antibodies: Affinity purified rabbit anti-RAN antibody A304-298A (lot A304-298A-1) used for IP at 6 µg per reaction. RAN was also immunoprecipitated by rabbit anti-RAN antibody A304-297A. For blotting immunoprecipitated RAN, A304-298A was used at 1 µg/ml. *Detection:* Chemiluminescence with an exposure time of 10 seconds.



Detection of human RAN by immunohistochemistry.
Samples: FFPE serial sections of human breast carcinoma.
Antibody: Affinity purified rabbit anti-RAN (Cat. No. A304-297A Lot1, left image and Cat. No. A304-298A Lot1, right image) used at a dilution of 1:5,000 (0.2µg/ml).
Detection: DAB



Detection of mouse RAN by immunohistochemistry.
Samples: FFPE serial sections of mouse renal cell carcinoma. *Antibody:* Affinity purified rabbit anti-RAN (Cat. No. A304-297A Lot1, left image and Cat. No. A304-298A Lot1, right image) used at a dilution of 1:5,000 (0.2µg/ml). *Detection:* DAB