

# ATP6V1H Antibody

Rabbit Polyclonal

Antigen Affinity Purified Protein ID NP\_057025.2

Catalog No. A304-308A-T GenelD 51606

Lot No. A304-308A-T-1

---

<b>APPLICATIONS</b>	WB, IP
<b>SPECIES REACTIVITY</b>	Human, Mouse
<b>PRESUMED REACTIVITY</b>	Based on 100% sequence identity, this antibody is predicted to react with Bovine and Pig
<b>AMOUNT</b>	10 µl
<b>CONCENTRATION</b>	1000 µg/ml
<b>STORAGE/SHELF LIFE</b>	2 - 8°C / 1 year from date of receipt
<b>PHYSICAL STATE</b>	Liquid
<b>BUFFER</b>	Tris-citrate/phosphate buffer, pH 7 to 8 containing 0.09% Sodium Azide
<b>ISOTYPE</b>	IgG
<b>ORIGIN</b>	USA
<b>PRODUCTION PROCEDURES</b>	Antibody was affinity purified using an epitope specific to ATP6V1H immobilized on solid support.

The epitope recognized by A304-308A-T maps to a region between residue 400 to 450 of human ATPase, H<sup>+</sup> Transporting, Lysosomal 50/57kDa, V1 Subunit H using the numbering given in entry NP\_057025.2 (GeneID 51606).

Antibody concentration was determined by extinction coefficient: absorbance at 280 nm of 1.4 equals 1.0 mg of IgG.

**APPLICATIONS** Centrifuge tube to remove product from lid. Optimal working dilutions should be determined experimentally by the investigator. Prepare working dilution immediately before use.

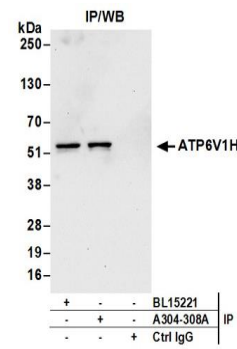
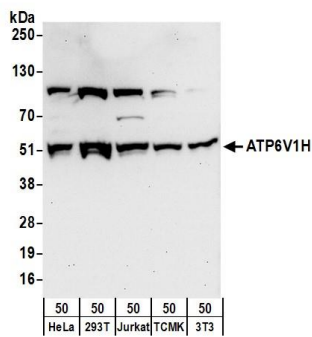
Western Blot 1:500 - 1:2,500

Immunoprecipitation 2 - 10 µg/mg lysate

**ADDITIONAL INFO** <https://www.bethyl.com/product/A304-308A-T>

Use the link above to view SDS, a current list of citations, and other product specific information. IP-western blot protocol: [https://www.bethyl.com/content/protocol\\_IP\\_WB](https://www.bethyl.com/content/protocol_IP_WB)

This document certifies that this product has met all of the quality control standards defined by Bethyl Laboratories, Inc.  
Michael Spencer, PhD Date: June 6, 2022



#### Detection of human and mouse ATP6V1H by western blot.

*Samples:* Whole cell lysate (50 µg) from HeLa, HEK293T, Jurkat, mouse TCMK-1, and mouse NIH 3T3 cells.

*Antibodies:* Affinity purified rabbit anti-ATP6V1H antibody A304-308A (lot A304-308A-1) used for WB at 1 µg/ml.

*Detection:* Chemiluminescence with an exposure time of 30 seconds.

#### Detection of human ATP6V1H by western blot of immunoprecipitates.

*Samples:* Whole cell lysate (0.5 or 1.0 mg per IP reaction; 20% of IP loaded) from HeLa cells.

*Antibodies:* Affinity purified rabbit anti-ATP6V1H antibody A304-308A (lot A304-308A-1) used for IP at 6 µg per reaction.

ATP6V1H was also immunoprecipitated by rabbit anti-ATP6V1H antibody BL15221. For blotting immunoprecipitated ATP6V1H, A304-308A was used at 1 µg/ml. *Detection:* Chemiluminescence with an exposure time of 30 seconds.