

MCT8 Antibody

Rabbit Polyclonal

Antigen Affinity Purified Protein ID NP_006508.2

Catalog No. A304-351A-T GeneID 6567

Lot No. A304-351A-T-1

APPLICATIONS	WB, IP
SPECIES REACTIVITY	Human, Mouse
AMOUNT	10 µl
CONCENTRATION	1000 µg/ml
STORAGE/SHELF LIFE	2 – 8°C / 1 year from date of receipt
PHYSICAL STATE	Liquid
BUFFER	Tris-citrate/phosphate buffer, pH 7 to 8 containing 0.09% Sodium Azide
ISOTYPE	IgG
ORIGIN	USA
PRODUCTION PROCEDURES	Antibody was affinity purified using an epitope specific to MCT8 immobilized on solid support.

The epitope recognized by A304-351A-T maps to a region between residue 250 to 300 of human Monocarboxylate Transporter 8 using the numbering given in entry NP_006508.2 (GeneID 6567).

APPLICATIONS Centrifuge tube to remove product from lid. Optimal working dilutions should be determined experimentally by the investigator. Prepare working dilution immediately before use.

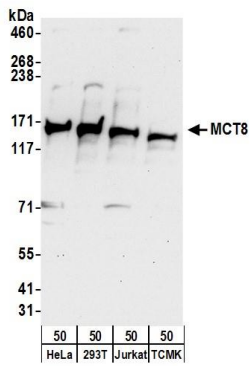
Western Blot 1:2,000 – 1:10,000

Immunoprecipitation 2 – 10 µg/mg lysate

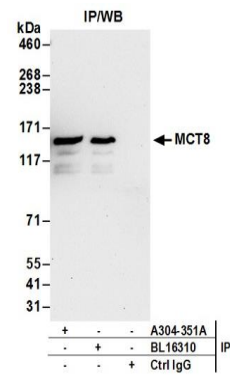
ADDITIONAL INFO <https://www.bethyl.com/product/A304-351A-T>

Use the link above to view SDS, a current list of citations, and other product specific information. IP-western blot protocol: https://www.bethyl.com/content/protocol_IP_WB

This document certifies that this product has met all of the quality control standards defined by Bethyl Laboratories, Inc.
Michael Spencer, PhD Date: June 6, 2022



Detection of human and mouse MCT8 by western blot.
Samples: Whole cell lysate (50 µg) from HeLa, HEK293T, Jurkat, and mouse TCMK-1 cells. *Antibodies:* Affinity purified rabbit anti-MCT8 antibody A304-351A (lot A304-351A-1) used for WB at 0.1 µg/ml. *Detection:* Chemiluminescence with an exposure time of 30 seconds.



Detection of human MCT8 by western blot of immunoprecipitates. *Samples:* Whole cell lysate (0.5 or 1.0 mg per IP reaction; 20% of IP loaded) from 293T and cells. *Antibodies:* Affinity purified rabbit anti-MCT8 antibody A304-351A (lot A304-351A-1) used for IP at 6 µg per reaction. MCT8 was also immunoprecipitated by rabbit anti-MCT8 antibody BL16310. For blotting immunoprecipitated MCT8, A304-351A was used at 1 µg/ml. *Detection:* Chemiluminescence with an exposure time of 30 seconds.