

GOT2 Antibody

Rabbit Polyclonal

Antigen Affinity Purified	RefSeq ID	NP_002071.2
Catalog No. A304-356A-T	Uniprot ID	P00505
Lot No. 1	GeneID	2806

APPLICATIONS	WB, IHC
SPECIES REACTIVITY	Human, Mouse
PRESUMED REACTIVITY	Based on 100% sequence identity, this antibody is predicted to react with Rat, X. tropicalis, Chicken, Bovine, Horse, Rabbit, Pig and Orangutan
AMOUNT	10 µl
CONCENTRATION	1000 µg/ml
STORAGE/SHELF LIFE	2 – 8°C / 1 year from date of receipt
PHYSICAL STATE	Liquid
BUFFER	Tris-citrate/phosphate buffer, pH 7 to 8 containing 0.09% Sodium Azide
ISOTYPE	IgG
ORIGIN	USA
PRODUCTION PROCEDURES	Antibody was affinity purified using an epitope specific to GOT2 immobilized on solid support.

The epitope recognized by A304-356A-T maps to a region between residue 380 to 430 of human Glutamic-Oxaloacetic Transaminase 2 using the numbering given in entry NP_002071.2 (GeneID 2806).

APPLICATIONS	Centrifuge tube to remove product from lid. Optimal working dilutions should be determined experimentally by the investigator. Prepare working dilution immediately before use.
	Western Blot 1:2000 – 1:10,000
	Immunohistochemistry 1:500 – 1:2000. Epitope retrieval with citrate buffer pH 6.0 is recommended for FFPE tissue sections.

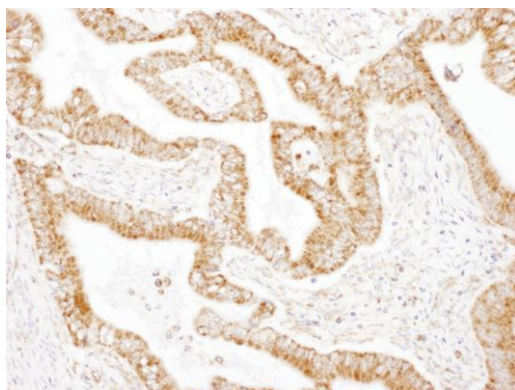
IHC HUMAN CONTROLS Ovarian Carcinoma, Prostate Carcinoma

IHC MOUSE CONTROLS Renal Cell Carcinoma, Teratoma

ADDITIONAL INFO <https://www.fortislifesciences.com/p/A304-356A-T>

Use the link above to view SDS, a current list of citations, and other product specific information.

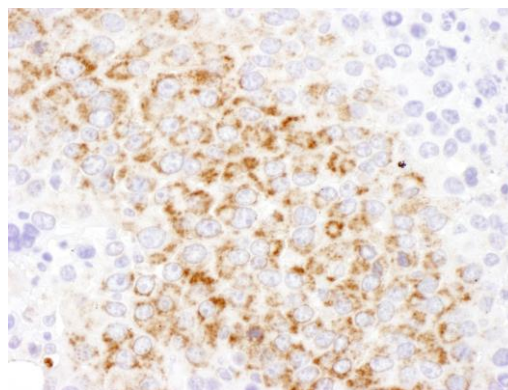
This document certifies that this product has met all of the quality control standards defined by Bethyl Laboratories, Inc.
Michael Spencer, PhD Date: January 8, 2024

**Detection of human GOT2 by immunohistochemistry.**

Sample: FFPE section of human prostate carcinoma.

Antibody: Affinity purified rabbit anti-GOT2 (Cat. No. A304-356A Lot1) used at a dilution of 1:1,000 (1 µg/ml).

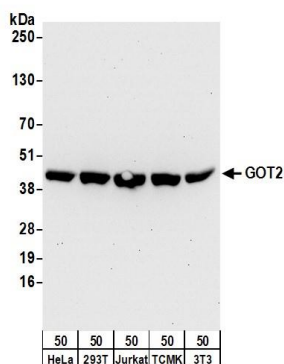
Detection: DAB. *Counterstain:* IHC Hematoxylin (blue).

**Detection of mouse GOT2 by immunohistochemistry.**

Sample: FFPE section of mouse renal cell carcinoma.

Antibody: Affinity purified rabbit anti-GOT2 (Cat. No. A304-356A Lot1) used at a dilution of 1:1,000 (1 µg/ml).

Detection: DAB

**Detection of human and mouse GOT2 by western blot.**

Samples: Whole cell lysate (50 µg) from HeLa, HEK293T, Jurkat, mouse TCMK-1, and mouse NIH 3T3 cells.

Antibodies: Affinity purified rabbit anti-GOT2 antibody A304-356A (lot A304-356A-1) used for WB at 0.1 µg/ml.

Detection: Chemiluminescence with an exposure time of 30 seconds.