

# B7-H3/CD276 Antibody

Rabbit Polyclonal

Antigen Affinity Purified

Protein ID NP\_001019907.1

Catalog No. A304-368A

GeneID 80381

Lot No. A304-368A-1



|                              |   |
|------------------------------|---|
| <b>APPLICATIONS</b>          | IP, IHC   |
| <b>SPECIES REACTIVITY</b>    | Human   |
| <b>PRESUMED REACTIVITY</b>   | Based on 100% sequence identity, this antibody is predicted to react with Mouse and Rat               |
| <b>AMOUNT</b>                | 100 µl  |
| <b>CONCENTRATION</b>         | 1000 µg/ml  |
| <b>STORAGE/SHELF LIFE</b>    | 2 - 8° C / 1 year from date of receipt  |
| <b>PHYSICAL STATE</b>        | Liquid  |
| <b>BUFFER</b>                | Tris-citrate/phosphate buffer, pH 7 to 8 containing 0.09% Sodium Azide                                |
| <b>ISOTYPE</b>               | IgG   |
| <b>ORIGIN</b>                | USA   |
| <b>PRODUCTION PROCEDURES</b> | Antibody was affinity purified using an epitope specific to B7-H3/CD276 immobilized on solid support. |

The epitope recognized by A304-368A maps to a region between residue 484 to 534 of human CD276 Molecule using the numbering given in entry NP\_001019907.1 (GeneID 80381).

Antibody concentration was determined by extinction coefficient: absorbance at 280 nm of 1.4 equals 1.0 mg of IgG.

**APPLICATIONS** Centrifuge tube to remove product from lid. Optimal working dilutions should be determined experimentally by the investigator. Prepare working dilution immediately before use.

Western Blot Not recommended. Use rabbit anti-B7-H3/CD276 antibody A304-367A.

Immunoprecipitation 2 - 10 µg/mg lysate

Immunohistochemistry 1:2,000 - 1:10,000. Epitope retrieval with citrate buffer pH 6.0 is recommended for FFPE tissue sections.

**APPLICATION NOTES** Western blot of immunoprecipitates performed using Normal Pig Serum (Cat. No. S100-020), Goat anti-Rabbit Light Chain HRP Conjugate (Cat. No. A120-113P) and 4-20% SDS-PAGE (link to IP-western blot protocol in Additional Info section below).

**IHC HUMAN CONTROLS** Prostate Carcinoma, MCF-7 Cells

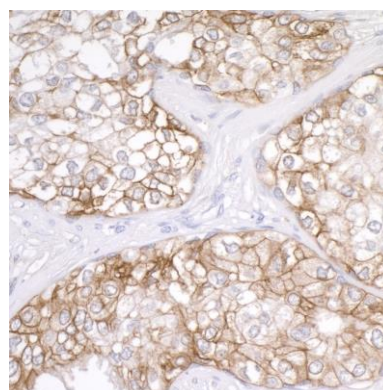
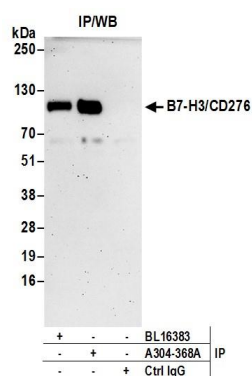
**ADDITIONAL INFO** <https://www.bethyl.com/product/A304-368A>

Use the link above to view SDS, a current list of citations, and other product specific information.

IP-western blot protocol: [https://www.bethyl.com/content/protocol\\_IP\\_WB](https://www.bethyl.com/content/protocol_IP_WB)

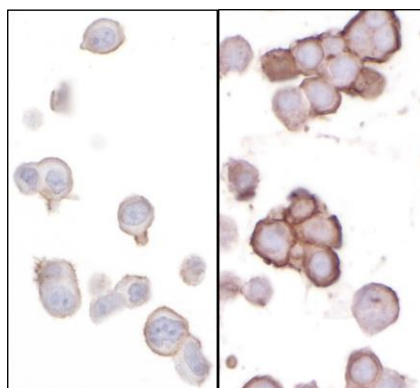
This document certifies that this product has met all of the quality control standards defined by Bethyl Laboratories, Inc.  
Eric McIntush, PhD | Chief Scientific Officer

Date: June 21, 2019



**Detection of human B7-H3/CD276 by western blot of immunoprecipitates.** *Samples:* Whole cell lysate (0.5 or 1.0 mg per IP reaction; 20% of IP loaded) prepared using NETN buffer from HeLa cells. *Antibodies:* Affinity purified rabbit anti-B7-H3/CD276 antibody A304-368A (lot A304-368A-1) used for IP at 6 µg per reaction. B7-H3/CD276 was also immunoprecipitated by rabbit anti-B7-H3/CD276 antibody BL16383. For blotting immunoprecipitated B7-H3/CD276, A304-367A was used at 1 µg/ml. *Detection:* Chemiluminescence with an exposure time of 3 minutes.

**Detection of human B7-H3/CD276 by immunohistochemistry.** *Sample:* FFPE section of human prostate carcinoma. *Antibody:* Affinity purified rabbit anti-B7-H3/CD276 (Cat. No. A304-368A Lot 1) used at a dilution of 1:5,000 (0.2 µg/ml). *Detection:* DAB Counterstain: IHC hematoxylin



**Detection of human B7-H3/CD276 by immunocytochemistry.** *Samples:* FFPE sections of MCF-7 cells (endogenous expression) and CD276 transfected Hek293 cells (over-expression). *Antibody:* Affinity purified rabbit anti-B7-H3/CD276 (Cat. No. A304-368A Lot 1) used at a dilution of 1:5,000 (0.2 µg/ml). *Detection:* DAB