

CD27 Antibody

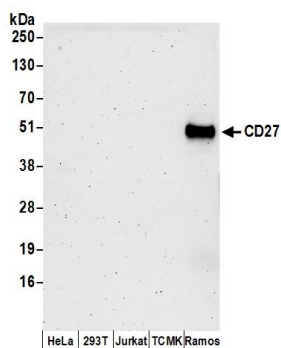
Rabbit Polyclonal

Antigen Affinity Purified Protein ID NP_001233.1
Catalog No. A304-380A-M GeneID 939
Lot No. A304-380A-M-1



APPLICATIONS	WB
SPECIES REACTIVITY	Human
AMOUNT	100 µl (10 blots)
CONCENTRATION	100 µg/ml
STORAGE/SHELF LIFE	2 - 8° C / 1 year from date of receipt
PHYSICAL STATE	Liquid
BUFFER	Tris-buffered Saline containing 0.1% BSA and 0.09% Sodium Azide
ISOTYPE	IgG
ORIGIN	USA
PRODUCTION PROCEDURES	Antibody was affinity purified using an epitope specific to CD27 immobilized on solid support. The epitope recognized by A304-380A-M maps to a region between residue 50 to 100 of human CD27 Molecule using the numbering given in entry NP_001233.1 (GeneID 939).
APPLICATIONS	Centrifuge tube to remove product from lid. Optimal working dilutions should be determined experimentally by the investigator. Prepare working dilution immediately before use. Western Blot 1:1000 Immunoprecipitation Not recommended
APPLICATION NOTES	Western blot of lysates performed using standard western blot reagents and 4-20% SDS-PAGE.
ADDITIONAL INFO	https://www.bethyl.com/product/A304-380A-M Use the link above to view SDS, a current list of citations, and other product specific information.

This document certifies that this product has met all of the quality control standards defined by Bethyl Laboratories, Inc.
Eric McIntush, PhD | Chief Scientific Officer Date: June 21, 2019



Detection of human CD27 by western blot. *Samples:* Whole cell lysate (50 μ g) prepared using NETN buffer from HeLa, HEK293T, Jurkat, mouse TCMK-1, and Ramos cells. *Antibody:* Affinity purified rabbit anti-CD27 antibody A304-380A-M used at 1:1000. *Detection:* Chemiluminescence with an exposure time of 3 minutes.