

CD19 Antibody

Rabbit Polyclonal

Antigen Affinity Purified

Protein ID NP_001761.3

Catalog No. A304-392A-M

GeneID 930

Lot No. A304-392A-M-1



APPLICATIONS	WB
SPECIES REACTIVITY	Human
AMOUNT	100 µl (10 blots)
CONCENTRATION	100 µg/ml
STORAGE/SHELF LIFE	2 - 8° C / 1 year from date of receipt
PHYSICAL STATE	Liquid
BUFFER	Tris-buffered Saline containing 0.1% BSA and 0.09% Sodium Azide
ISOTYPE	IgG
ORIGIN	USA
PRODUCTION PROCEDURES	Antibody was affinity purified using an epitope specific to CD19 immobilized on solid support.

The epitope recognized by A304-392A-M maps to a region between residue 506 to 556 of human CD19 Molecule using the numbering given in entry NP_001761.3 (GeneID 930).

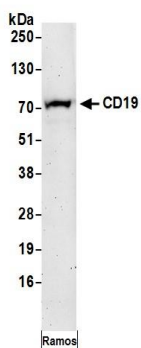
APPLICATIONS Centrifuge tube to remove product from lid. Optimal working dilutions should be determined experimentally by the investigator. Prepare working dilution immediately before use.

Western Blot	1:1000
Immunoprecipitation	Not recommended

APPLICATION NOTES Western blot of lysates performed using standard western blot reagents and 4-20% SDS-PAGE.

ADDITIONAL INFO <https://www.bethyl.com/product/A304-392A-M>
Use the link above to view SDS, a current list of citations, and other product specific information.

This document certifies that this product has met all of the quality control standards defined by Bethyl Laboratories, Inc.
Eric McIntush, PhD | Chief Scientific Officer Date: June 21, 2019



Detection of human CD19 by western blot. *Samples:* Whole cell lysate (50 μ g) prepared using NETN buffer from Ramos cells. *Antibody:* Affinity purified rabbit anti-CD19 antibody A304-392A-M used at 1:1000. *Detection:* Chemiluminescence with an exposure time of 3 minutes.