

# CD43 Antibody

Rabbit Polyclonal

Antigen Affinity Purified

Protein ID NP\_001025459.1

Catalog No. A304-393A-M

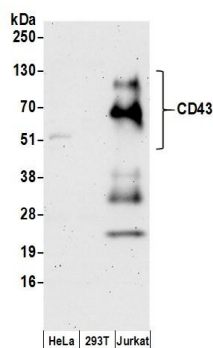
GeneID 6693

Lot No. A304-393A-M-1



APPLICATIONS	WB, IP, IHC
SPECIES REACTIVITY	Human
AMOUNT	100 µl (10 blots)
CONCENTRATION	100 µg/ml
STORAGE/SHELF LIFE	2 – 8° C / 1 year from date of receipt
PHYSICAL STATE	Liquid
BUFFER	Tris-buffered Saline containing 0.1% BSA and 0.09% Sodium Azide
ISOTYPE	IgG
ORIGIN	USA
PRODUCTION PROCEDURES	Antibody was affinity purified using an epitope specific to CD43 immobilized on solid support.  The epitope recognized by A304-393A-M maps to a region between residue 350 to 400 of human CD43 Molecule using the numbering given in entry NP_001025459.1 (GeneID 6693).
APPLICATIONS	Centrifuge tube to remove product from lid. Optimal working dilutions should be determined experimentally by the investigator. Prepare working dilution immediately before use.  Western Blot 1:1000  Immunoprecipitation The antibody contained within A304-393A-M has been qualified for use in immunoprecipitation; however, we recommend using the alternative formulation of this antibody found as product A304-393A.  Immunohistochemistry 1:50 – 1:200. Epitope retrieval with citrate buffer pH 6.0 is recommended for FFPE tissue sections.
APPLICATION NOTES	Western blot of immunoprecipitates performed using Normal Pig Serum (Cat. No. S100-020), Goat anti-Rabbit Light Chain HRP Conjugate (Cat. No. A120-113P) and 4-20% SDS-PAGE (link to IP-western blot protocol in Additional Info section below).  Western blot of lysates performed using standard western blot reagents and 4-20% SDS-PAGE.
ADDITIONAL INFO	<a href="https://www.bethyl.com/product/A304-393A-M">https://www.bethyl.com/product/A304-393A-M</a> Use the link above to view SDS, a current list of citations, and other product specific information. IP-western blot protocol: <a href="https://www.bethyl.com/content/protocol_IP_WB">https://www.bethyl.com/content/protocol_IP_WB</a>

This document certifies that this product has met all of the quality control standards defined by Bethyl Laboratories, Inc.  
Eric McIntush, PhD | Chief Scientific Officer Date: June 21, 2019

**Detection of human CD43 by western blot. *Samples:***

Whole cell lysate (50 µg) prepared using RIPA buffer from HeLa, HEK293T, and Jurkat cells. *Antibody:* Affinity purified rabbit anti-CD43 antibody A304-393A-M used at 1:1000.

*Detection:* Chemiluminescence with an exposure time of 3 minutes.