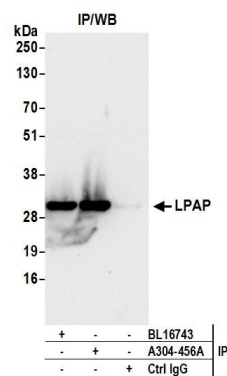


Detection of human LPAP by western blot. *Samples:* Whole cell lysate (50 μ g) prepared using NETN buffer from HeLa, HEK293T, and Jurkat cells. *Antibodies:* Affinity purified rabbit anti-LPAP antibody A304-456A (lot A304-456A-1) used for WB at 0.1 μ g/ml. *Detection:* Chemiluminescence with an exposure time of 30 seconds.



Detection of human LPAP by western blot of immunoprecipitates. *Samples:* Whole cell lysate (1 mg for IP; 20% of IP loaded) prepared using NETN buffer from Jurkat cells. *Antibodies:* Affinity purified rabbit anti-LPAP antibody A304-456A (lot A304-456A-1) used for IP at 6 μ g per reaction. LPAP was also immunoprecipitated by rabbit anti-LPAP antibody BL16743. For blotting immunoprecipitated LPAP, A304-456A was used at 0.1 μ g/ml. *Detection:* Chemiluminescence with an exposure time of 30 seconds.