

# P23 Antibody

Rabbit Polyclonal

Antigen Affinity Purified

Protein ID NP\_006592.3

Catalog No. A304-499A

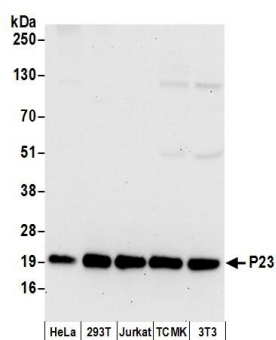
GeneID 10728

Lot No. A304-499A-1



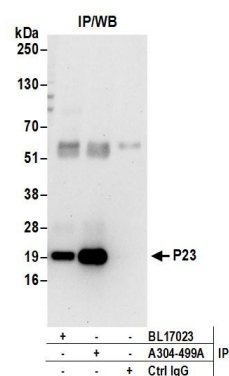
|                              |   |
|------------------------------|---|
| <b>APPLICATIONS</b>          | WB, IP, IHC   |
| <b>SPECIES REACTIVITY</b>    | Human, Mouse  |
| <b>PRESUMED REACTIVITY</b>   | Based on 100% sequence identity, this antibody is predicted to react with Rat, Chicken, Bovine and Orangutan  |
| <b>AMOUNT</b>                | 100 µl  |
| <b>CONCENTRATION</b>         | 1000 µg/ml  |
| <b>STORAGE/SHELF LIFE</b>    | 2 - 8° C / 1 year from date of receipt  |
| <b>PHYSICAL STATE</b>        | Liquid  |
| <b>BUFFER</b>                | Tris-citrate/phosphate buffer, pH 7 to 8 containing 0.09% Sodium Azide  |
| <b>ISOTYPE</b>               | IgG   |
| <b>ORIGIN</b>                | USA   |
| <b>PRODUCTION PROCEDURES</b> | <p>Antibody was affinity purified using an epitope specific to P23 immobilized on solid support.</p> <p>The epitope recognized by A304-499A maps to a region between residue 110 to 160 of human Progesterone Receptor Complex p23 using the numbering given in entry NP_006592.3 (GeneID 10728).</p> <p>Antibody concentration was determined by extinction coefficient: absorbance at 280 nm of 1.4 equals 1.0 mg of IgG.</p> |
| <b>APPLICATIONS</b>          | <p>Centrifuge tube to remove product from lid. Optimal working dilutions should be determined experimentally by the investigator. Prepare working dilution immediately before use.</p> <p>Western Blot 1:2,000 - 1:10,000</p> <p>Immunoprecipitation 2 - 10 µg/mg lysate</p> <p>Immunohistochemistry 1:2,000 - 1:10,000. Epitope retrieval with citrate buffer pH 6.0 is recommended for FFPE tissue sections.</p>              |
| <b>APPLICATION NOTES</b>     | <p>Western blot of immunoprecipitates performed using Normal Pig Serum (Cat. No. S100-020), Goat anti-Rabbit Light Chain HRP Conjugate (Cat. No. A120-113P) and 4-12% SDS-PAGE (link to IP-western blot protocol in Additional Info section below).</p> <p>Western blot of lysates performed using standard western blot reagents and 4-12% SDS-PAGE.</p>   |
| <b>IHC HUMAN CONTROLS</b>    | Breast Carcinoma, Colon Carcinoma, Ovarian Carcinoma, Prostate Carcinoma, Testicular Seminoma   |
| <b>IHC MOUSE CONTROLS</b>    | Hybridoma Tumor, Renal Cell Carcinoma, Teratoma   |
| <b>ADDITIONAL INFO</b>       | <p><a href="https://www.bethyl.com/product/A304-499A">https://www.bethyl.com/product/A304-499A</a></p> <p>Use the link above to view SDS, a current list of citations, and other product specific information.</p> <p>IP-western blot protocol: <a href="https://www.bethyl.com/content/protocol_IP_WB">https://www.bethyl.com/content/protocol_IP_WB</a></p>   |

This document certifies that this product has met all of the quality control standards defined by Bethyl Laboratories, Inc.  
Eric McIntush, PhD | Chief Scientific Officer Date: June 21, 2019



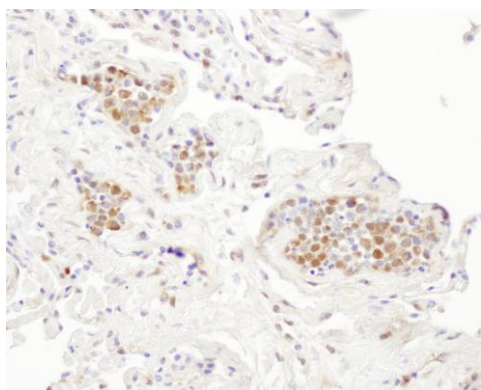
#### Detection of human and mouse P23 by western blot.

**Samples:** Whole cell lysate (50 µg) from HeLa, HEK293T, Jurkat, mouse TCMK-1, and mouse NIH 3T3 cells prepared using NETN lysis buffer. **Antibodies:** Affinity purified rabbit anti-P23 antibody A304-499A (lot A304-499A-1) used for WB at 0.1 µg/ml. **Detection:** Chemiluminescence with an exposure time of 30 seconds.



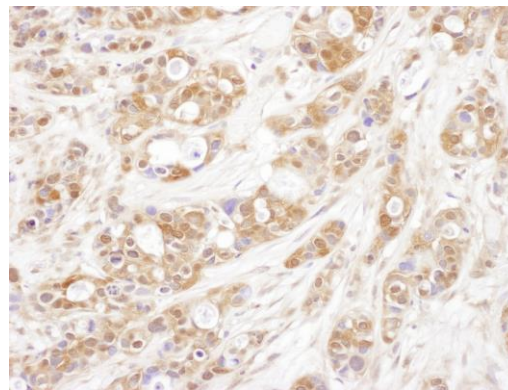
#### Detection of human P23 by western blot of immunoprecipitates.

**Samples:** Whole cell lysate (0.5 or 1.0 mg per IP reaction; 20% of IP loaded) from 293T cells prepared using NETN lysis buffer. **Antibodies:** Affinity purified rabbit anti-P23 antibody A304-499A (lot A304-499A-1) used for IP at 6 µg per reaction. P23 was also immunoprecipitated by rabbit anti-P23 antibody BL17023. For blotting immunoprecipitated P23, A304-499A was used at 1 µg/ml. **Detection:** Chemiluminescence with an exposure time of 30 seconds.



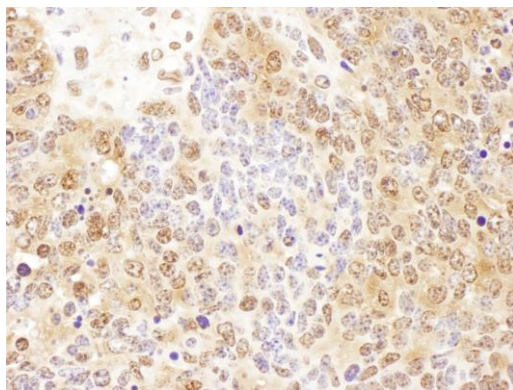
#### Detection of human P23 by immunohistochemistry.

**Sample:** FFPE section of human lung cancer. **Antibody:** Affinity purified rabbit anti-P23 (Cat. No. A304-499A Lot1) used at a dilution of 1:5,000 (0.2µg/ml). **Detection:** DAB



#### Detection of human P23 by immunohistochemistry.

**Sample:** FFPE section of human ovarian carcinoma. **Antibody:** Affinity purified rabbit anti-P23 (Cat. No. A304-499A Lot1) used at a dilution of 1:5,000 (0.2µg/ml). **Detection:** DAB



**Detection of mouse P23 by immunohistochemistry.**

*Sample:* FFPE section of mouse teratoma. *Antibody:* Affinity purified rabbit anti- P23 (Cat. No. A304-499A Lot1) used at a dilution of 1:1,000 (1 µg/ml). *Detection:* DAB