

P23 Antibody

Rabbit Polyclonal

Antigen Affinity Purified Protein ID NP_006592.3

Catalog No. A304-499A-T GenelD 10728

Lot No. A304-499A-T-1

APPLICATIONS	WB, IP, IHC
SPECIES REACTIVITY	Human, Mouse
PRESUMED REACTIVITY	Based on 100% sequence identity, this antibody is predicted to react with Rat, Chicken, Bovine and Orangutan
AMOUNT	10 µl
CONCENTRATION	1000 µg/ml
STORAGE/SHELF LIFE	2 – 8°C / 1 year from date of receipt
PHYSICAL STATE	Liquid
BUFFER	Tris-citrate/phosphate buffer, pH 7 to 8 containing 0.09% Sodium Azide
ISOTYPE	IgG
ORIGIN	USA
PRODUCTION PROCEDURES	Antibody was affinity purified using an epitope specific to P23 immobilized on solid support.

The epitope recognized by A304-499A-T maps to a region between residue 110 to 160 of human Progesterone Receptor Complex p23 using the numbering given in entry NP_006592.3 (GenelD 10728).

APPLICATIONS Centrifuge tube to remove product from lid. Optimal working dilutions should be determined experimentally by the investigator. Prepare working dilution immediately before use.

Western Blot 1:2,000 – 1:10,000

Immunoprecipitation 2 – 10 µg/mg lysate

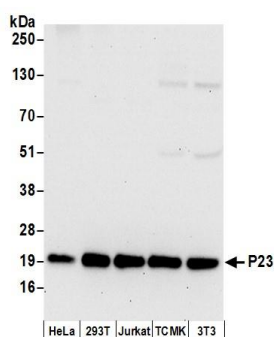
Immunohistochemistry 1:2,000 – 1:10,000. Epitope retrieval with citrate buffer pH 6.0 is recommended for FFPE tissue sections.

ADDITIONAL INFO <https://www.bethyl.com/product/A304-499A-T>

Use the link above to view SDS, a current list of citations, and other product specific information.

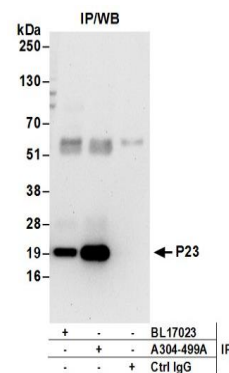
IP-western blot protocol: https://www.bethyl.com/content/protocol_IP_WB

This document certifies that this product has met all of the quality control standards defined by Bethyl Laboratories, Inc.
Michael Spencer, PhD Date: June 6, 2022



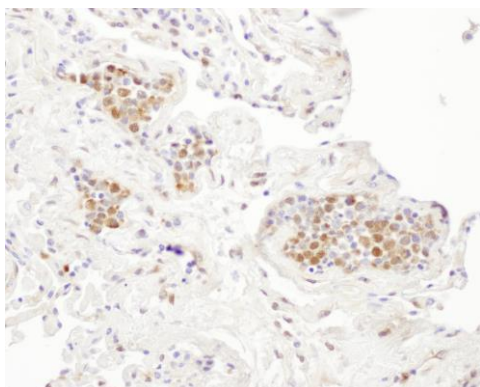
Detection of human and mouse P23 by western blot.

Samples: Whole cell lysate (50 µg) from HeLa, HEK293T, Jurkat, mouse TCMK-1, and mouse NIH 3T3 cells prepared using NETN lysis buffer. *Antibodies:* Affinity purified rabbit anti-P23 antibody A304-499A (lot A304-499A-1) used for WB at 0.1 µg/ml. *Detection:* Chemiluminescence with an exposure time of 30 seconds.



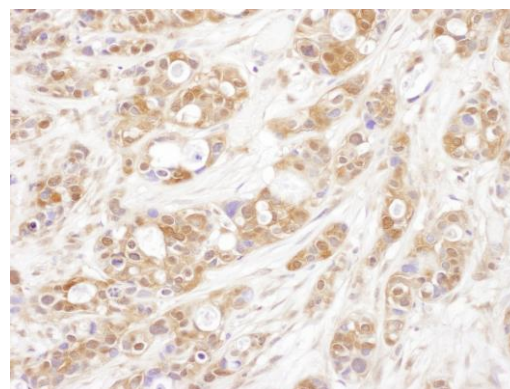
Detection of human P23 by western blot of immunoprecipitates.

Samples: Whole cell lysate (0.5 or 1.0 mg per IP reaction; 20% of IP loaded) from 293T cells prepared using NETN lysis buffer. *Antibodies:* Affinity purified rabbit anti-P23 antibody A304-499A (lot A304-499A-1) used for IP at 6 µg per reaction. P23 was also immunoprecipitated by rabbit anti-P23 antibody BL17023. For blotting immunoprecipitated P23, A304-499A was used at 1 µg/ml. *Detection:* Chemiluminescence with an exposure time of 30 seconds.



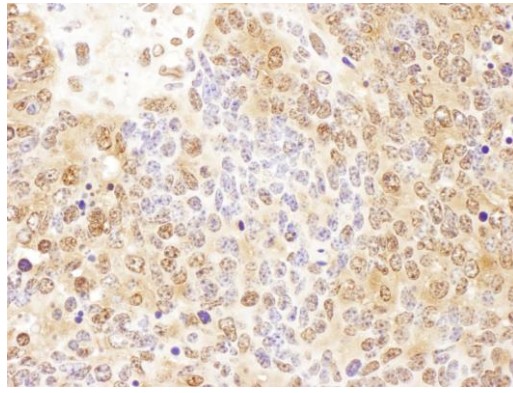
Detection of human P23 by immunohistochemistry.

Sample: FFPE section of human lung cancer. *Antibody:* Affinity purified rabbit anti-P23 (Cat. No. A304-499A Lot1) used at a dilution of 1:5,000 (0.2 µg/ml). *Detection:* DAB



Detection of human P23 by immunohistochemistry.

Sample: FFPE section of human ovarian carcinoma. *Antibody:* Affinity purified rabbit anti-P23 (Cat. No. A304-499A Lot1) used at a dilution of 1:5,000 (0.2 µg/ml). *Detection:* DAB



Detection of mouse P23 by immunohistochemistry.

Sample: FFPE section of mouse teratoma. *Antibody:* Affinity purified rabbit anti-P23 (Cat. No. A304-499A Lot1) used at a dilution of 1:1,000 (1 µg/ml). *Detection:* DAB