

EPI64 Antibody

Rabbit Polyclonal

Antigen Affinity Purified

Protein ID NP_114143.1

Catalog No. A304-587A

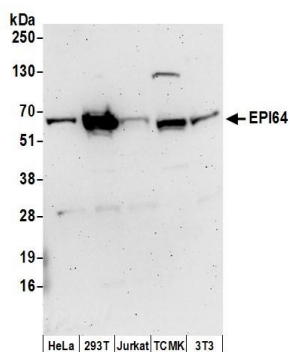
GeneID 83874

Lot No. A304-587A-1



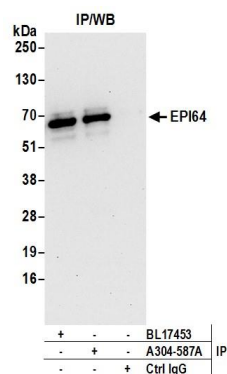
APPLICATIONS	WB, IP
SPECIES REACTIVITY	Human, Mouse
AMOUNT	100 µl
CONCENTRATION	1000 µg/ml
STORAGE/SHELF LIFE	2 - 8° C / 1 year from date of receipt
PHYSICAL STATE	Liquid
BUFFER	Tris-citrate/phosphate buffer, pH 7 to 8 containing 0.09% Sodium Azide
ISOTYPE	IgG
ORIGIN	USA
PRODUCTION PROCEDURES	<p>Antibody was affinity purified using an epitope specific to EPI64 immobilized on solid support.</p> <p>The epitope recognized by A304-587A maps to a region between residue 458 to 508 of human EBP50-PDX Interactor of 64 kDa using the numbering given in entry NP_114143.1 (GeneID 83874).</p> <p>Antibody concentration was determined by extinction coefficient: absorbance at 280 nm of 1.4 equals 1.0 mg of IgG.</p>
APPLICATIONS	<p>Centrifuge tube to remove product from lid. Optimal working dilutions should be determined experimentally by the investigator. Prepare working dilution immediately before use.</p> <p>Western Blot 1:2,000 - 1:10,000</p> <p>Immunoprecipitation 2 - 10 µg/mg lysate</p>
APPLICATION NOTES	<p>Western blot of immunoprecipitates performed using Normal Pig Serum (Cat. No. S100-020), Goat anti-Rabbit Light Chain HRP Conjugate (Cat. No. A120-113P) and 4-20% SDS-PAGE (link to IP-western blot protocol in Additional Info section below).</p> <p>Western blot of lysates performed using standard western blot reagents and 4-20% SDS-PAGE.</p>
ADDITIONAL INFO	<p>https://www.bethyl.com/product/A304-587A</p> <p>Use the link above to view SDS, a current list of citations, and other product specific information.</p> <p>IP-western blot protocol: https://www.bethyl.com/content/protocol_IP_WB</p>

This document certifies that this product has met all of the quality control standards defined by Bethyl Laboratories, Inc.
Eric McIntush, PhD | Chief Scientific Officer Date: June 21, 2019



Detection of human and mouse EPI64 by western blot.

Samples: Whole cell lysate (50 µg) from HeLa, HEK293T, Jurkat, mouse TCMK-1, and mouse NIH 3T3 cells prepared using NETN lysis buffer. **Antibodies:** Affinity purified rabbit anti-EPI64 antibody A304-587A (lot A304-587A-1) used for WB at 0.1 µg/ml. **Detection:** Chemiluminescence with an exposure time of 3 minutes.



Detection of human EPI64 by western blot of immunoprecipitates.

Samples: Whole cell lysate (0.5 or 1.0 mg per IP reaction; 20% of IP loaded) from 293T cells prepared using NETN lysis buffer. **Antibodies:** Affinity purified rabbit anti-EPI64 antibody A304-587A (lot A304-587A-1) used for IP at 6 µg per reaction. EPI64 was also immunoprecipitated by rabbit anti-EPI64 antibody BL17453. For blotting immunoprecipitated EPI64, A304-587A was used at 0.4 µg/ml. **Detection:** Chemiluminescence with an exposure time of 30 seconds.