

SEC22B Antibody

Rabbit Polyclonal

Antigen Affinity Purified

Protein ID NP_004883.3

Catalog No. A304-601A

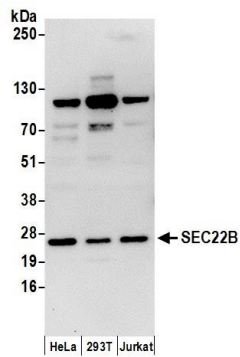
GeneID 9554

Lot No. A304-601A-1

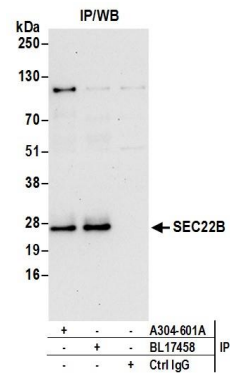


APPLICATIONS	WB, IP				
SPECIES REACTIVITY	Human				
PRESUMED REACTIVITY	Based on 100% sequence identity, this antibody is predicted to react with Mouse, Rat, Zebrafish, X. tropicalis, Chicken and Orangutan				
AMOUNT	100 µl				
CONCENTRATION	1000 µg/ml				
STORAGE/SHELF LIFE	2 - 8° C / 1 year from date of receipt				
PHYSICAL STATE	Liquid				
BUFFER	Tris-citrate/phosphate buffer, pH 7 to 8 containing 0.09% Sodium Azide				
ISOTYPE	IgG				
ORIGIN	USA				
PRODUCTION PROCEDURES	<p>Antibody was affinity purified using an epitope specific to SEC22B immobilized on solid support.</p> <p>The epitope recognized by A304-601A maps to a region between residue 100 to 150 of human SEC22 Vesicle Trafficking Protein Homolog B using the numbering given in entry NP_004883.3 (GeneID 9554).</p> <p>Antibody concentration was determined by extinction coefficient: absorbance at 280 nm of 1.4 equals 1.0 mg of IgG.</p>				
APPLICATIONS	<p>Centrifuge tube to remove product from lid. Optimal working dilutions should be determined experimentally by the investigator. Prepare working dilution immediately before use.</p> <table border="0"><tr><td>Western Blot</td><td>1:500 – 1:2,500</td></tr><tr><td>Immunoprecipitation</td><td>2 – 10 µg/mg lysate</td></tr></table>	Western Blot	1:500 – 1:2,500	Immunoprecipitation	2 – 10 µg/mg lysate
Western Blot	1:500 – 1:2,500				
Immunoprecipitation	2 – 10 µg/mg lysate				
APPLICATION NOTES	<p>Western blot of immunoprecipitates performed using Normal Pig Serum (Cat. No. S100-020), Goat anti-Rabbit Light Chain HRP Conjugate (Cat. No. A120-113P) and 4-20% SDS-PAGE (link to IP-western blot protocol in Additional Info section below).</p> <p>Western blot of lysates performed using standard western blot reagents and 4-20% SDS-PAGE.</p>				
ADDITIONAL INFO	<p>https://www.bethyl.com/product/A304-601A Use the link above to view SDS, a current list of citations, and other product specific information. IP-western blot protocol: https://www.bethyl.com/content/protocol_IP_WB</p>				

This document certifies that this product has met all of the quality control standards defined by Bethyl Laboratories, Inc.
Eric McIntush, PhD | Chief Scientific Officer Date: June 21, 2019



Detection of human SEC22B by western blot. *Samples:* Whole cell lysate (50 μ g) from HeLa, HEK293T, and Jurkat cells prepared using NETN lysis buffer. *Antibodies:* Affinity purified rabbit anti-SEC22B antibody A304-601A (lot A304-601A-1) used for WB at 1 μ g/ml. *Detection:* Chemiluminescence with an exposure time of 30 seconds.



Detection of human SEC22B by western blot of immunoprecipitates. *Samples:* Whole cell lysate (0.5 or 1.0 mg per IP reaction; 20% of IP loaded) from HeLa cells prepared using RIPA lysis buffer. *Antibodies:* Affinity purified rabbit anti-SEC22B antibody A304-601A (lot A304-601A-1) used for IP at 6 μ g per reaction. SEC22B was also immunoprecipitated by rabbit anti-SEC22B antibody BL17458. For blotting immunoprecipitated SEC22B, A304-601A was used at 1 μ g/ml. *Detection:* Chemiluminescence with an exposure time of 30 seconds.