

LUZP1 Antibody

Rabbit Polyclonal

Antigen Affinity Purified

Protein ID NP_001136018.1

Catalog No. A304-634A-M

GeneID 7798

Lot No. A304-634A-M-1



APPLICATIONS	WB, IP
SPECIES REACTIVITY	Human
AMOUNT	100 µl (10 blots)
CONCENTRATION	400 µg/ml
STORAGE/SHELF LIFE	2 - 8° C / 1 year from date of receipt
PHYSICAL STATE	Liquid
BUFFER	Tris-buffered Saline containing 0.1% BSA and 0.09% Sodium Azide
ISOTYPE	IgG
ORIGIN	USA

PRODUCTION PROCEDURES Antibody was affinity purified using an epitope specific to LUZP1 immobilized on solid support. The epitope recognized by A304-634A-M maps to a region between residue 1 to 50 of human Leucine Zipper Protein 1 using the numbering given in entry NP_001136018.1 (GeneID 7798).

APPLICATIONS Centrifuge tube to remove product from lid. Optimal working dilutions should be determined experimentally by the investigator. Prepare working dilution immediately before use.

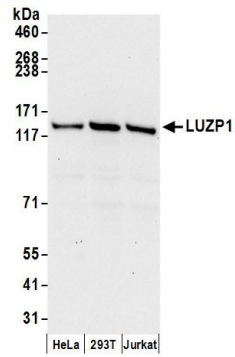
Western Blot	1:1000
Immunoprecipitation	The antibody contained within A304-634A-M has been qualified for use in immunoprecipitation; however, we recommend using the alternative formulation of this antibody found as product A304-634A.

APPLICATION NOTES Western blot of immunoprecipitates performed using Normal Pig Serum (Cat. No. S100-020), Goat anti-Rabbit Light Chain HRP Conjugate (Cat. No. A120-113P) and 4-8% SDS-PAGE (link to IP-western blot protocol in Additional Info section below).

Western blot of lysates performed using standard western blot reagents and 4-8% SDS-PAGE.

ADDITIONAL INFO <https://www.bethyl.com/product/A304-634A-M>
Use the link above to view SDS, a current list of citations, and other product specific information.
IP-western blot protocol: https://www.bethyl.com/content/protocol_IP_WB

This document certifies that this product has met all of the quality control standards defined by Bethyl Laboratories, Inc.
Eric McIntush, PhD | Chief Scientific Officer Date: June 21, 2019



Detection of human LUZP1 by western blot. *Samples:* Whole cell lysate (50 μ g) from HeLa, HEK293T, and Jurkat cells prepared using NETN lysis buffer. ***Antibody:*** Affinity purified rabbit anti-LUZP1 antibody A304-634A-M used at 1:1000. ***Detection:*** Chemiluminescence with an exposure time of 30 seconds.