

# BCKDE1A, Phospho (S293) Antibody

Rabbit Polyclonal

Antigen Affinity Purified                      Protein ID    NP\_000700.1  
Catalog No.    A304-672A                      Gene ID        593  
Lot No.            A304-672A-2



**APPLICATIONS**                      WB  
**REACTIVITY TESTED**                Mouse  
**PRESUMED REACTIVITY**    Based on 100% sequence identity, this antibody is predicted to react with Human, Rat, Sheep, Bovine, Dog, Horse, Rabbit, Pig, Panda, Orangutan, Rhesus Monkey, Gorilla, Chimpanzee, Acari, Basidiomycota, Cetartiodactyla, Maxillopoda, Panamanian leafcutter ant, Yellowfever mosquito and Smut fungus\_237631.  
**AMOUNT**                                100 µl at 1 mg/ml  
**STORAGE/SHELF LIFE**                2 - 8° C / 1 year from date of receipt  
**PHYSICAL STATE**                      Liquid  
**BUFFER**                                 Tris-citrate/phosphate buffer, pH 7 to 8 containing 0.09% Sodium Azide  
**ORIGIN**                                 USA  
**PRODUCTION PROCEDURES**        Antibody was affinity purified using an epitope specific to BCKDE1A, Phospho (S293) immobilized on solid support.

The epitope recognized by A303-567A maps to phosphorylated serine 293 and surrounding residues of human Branched Chain Keto Acid Dehydrogenase E1, Alpha polypeptide. Using the numbering given in entry NP\_000700.1 (GeneID 593) for the precursor protein, the phosphorylated serine corresponds to serine 337 of human Branched Chain Keto Acid Dehydrogenase E1, Alpha Polypeptide using the numbering given in entry NP\_000700.1 (GeneID 593).

Antibody concentration was determined by extinction coefficient: absorbance at 280 nm of 1.4 equals 1.0 mg of IgG.

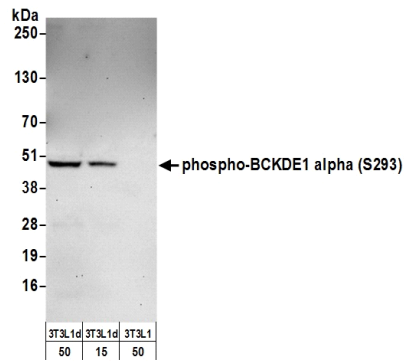
**APPLICATIONS**                      Centrifuge tube to remove product from lid. Optimal working dilutions should be determined experimentally by the investigator. Prepare working dilution immediately before use.  
Western Blot                                1:2,000 to 1:10,000  
Immunoprecipitation                      Not Recommended

**APPLICATION NOTES**                Validation by IP/Western Blot was performed using a 4-20% SDS-PAGE gel and ReliaBLOT® Reagents (Cat. No. WB120).

**ADDITIONAL INFO**                    <http://www.bethyl.com/product/A304-672A>

Use the link above to view SDS, a current list of citations, and other product specific information.

# BCKDE1A, Phospho (S293) Antibody: A304-672A



**Detection of Mouse BCKDE1A Phospho (S293) by Western Blot.** *Samples:* Whole cell lysate from differentiated NIH3T3-L1 (15 and 50  $\mu$ g) and NIH3T3-L1 (50  $\mu$ g) cells prepared using NETN lysis buffer. *Antibodies:* Affinity purified rabbit anti-BCKDE1A phospho (S293) antibody A304-672A (lot A304-672A-2) used for WB at 0.1  $\mu$ g/ml. *Detection:* Chemiluminescence with an exposure time of 30 seconds.