

BCKDE1A, Phospho (S293) Antibody

Rabbit Polyclonal

Antigen Affinity Purified Protein ID NP_000700.1
Catalog No. A304-672A-T Gene ID 593
Lot No. A304-672A-T-1



APPLICATIONS	WB
REACTIVITY TESTED	Mouse
PRESUMED REACTIVITY	Based on 100% sequence identity, this antibody is predicted to react with Human, Rat, Sheep, Bovine, Dog, Horse, Rabbit, Pig, Panda, Orangutan, Rhesus Monkey, Gorilla, Chimpanzee, Acari, Basidiomycota, Cetartiodactyla, Maxillopoda, Panamanian leafcutter ant, Yellowfever mosquito and Smut fungus_237631.
AMOUNT	20 µl (2 blots)
STORAGE/SHELF LIFE	2 - 8° C / 1 year from date of receipt
PHYSICAL STATE	Liquid
BUFFER	Tris-buffered Saline with 0.1% BSA containing 0.09% Sodium Azide
ORIGIN	USA
PRODUCTION PROCEDURES	Antibody was affinity purified using an epitope specific to BCKDE1A, Phospho (S293) immobilized on solid support.

The epitope recognized by A304-672A-T maps to phosphorylated serine 293 and surrounding residues of human Branched Chain Keto Acid Dehydrogenase E1, Alpha polypeptide. Using the numbering given in entry NP_000700.1 (GeneID 593) for the precursor protein, the phosphorylated serine corresponds to serine 337 of human Branched Chain Keto Acid Dehydrogenase E1, Alpha Polypeptide using the numbering given in entry NP_000700.1 (GeneID 593).

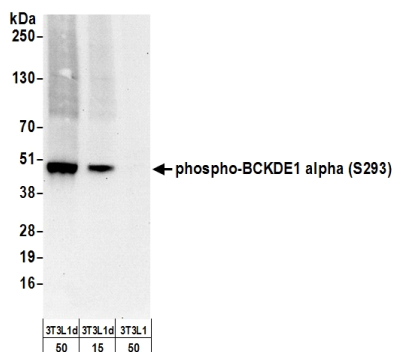
APPLICATIONS	Centrifuge tube to remove product from lid. Optimal working dilutions should be determined experimentally by the investigator. Prepare working dilution immediately before use.
	Western Blot 1:1000
	Immunoprecipitation Not Recommended

APPLICATION NOTES Validation by IP/Western Blot was performed using a 4-20% SDS-PAGE gel and ReliaBLOT® Reagents (Cat. No. WB120).

ADDITIONAL INFO <http://www.bethyl.com/product/A304-672A-T>

Use the link above to view SDS, a current list of citations, and other product specific information.

BCKDE1A, Phospho (S293) Antibody: A304-672A-T



Detection of Mouse BCKDE1A Phospho (S293) by Western Blot. *Samples:* Whole cell lysate from differentiated NIH3T3-L1 (15 and 50 µg) and NIH3T3-L1 (50 µg) cells prepared using NETN lysis buffer. *Antibody:* Affinity purified rabbit anti-BCKDE1A phospho (S293) antibody A304-672A-T used at 1:1000. *Detection:* Chemiluminescence with an exposure time of 30 seconds.