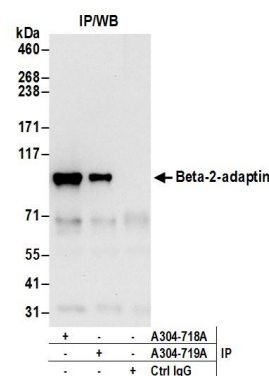


Detection of human and mouse Beta-2-adaptin by western blot. *Samples:* Whole cell lysate (50 μ g) from HeLa, HEK293T, Jurkat, mouse TCMK-1, and mouse NIH 3T3 cells prepared using NETN lysis buffer. *Antibodies:* Affinity purified rabbit anti-Beta-2-adaptin antibody A304-718A (lot A304-718A-1) used for WB at 0.1 μ g/ml. *Detection:* Chemiluminescence with an exposure time of 10 seconds.



Detection of human Beta-2-adaptin by western blot of immunoprecipitates. *Samples:* Whole cell lysate (0.5 or 1.0 mg per IP reaction; 20% of IP loaded) from 293T cells prepared using NETN lysis buffer. *Antibodies:* Affinity purified rabbit anti-Beta-2-adaptin antibody A304-718A (lot A304-718A-1) used for IP at 6 μ g per reaction. Beta-2-adaptin was also immunoprecipitated by rabbit anti-Beta-2-adaptin antibody A304-719A. For blotting immunoprecipitated Beta-2-adaptin, A304-718A was used at 1 μ g/ml. *Detection:* Chemiluminescence with an exposure time of 10 seconds.