

Beta-2-adaptin Antibody

Rabbit Polyclonal

Antigen Affinity Purified	RefSeq ID	NP_001273.1
Catalog No. A304-719A-T	Uniprot ID	P63010
Lot No. 2	GeneID	163

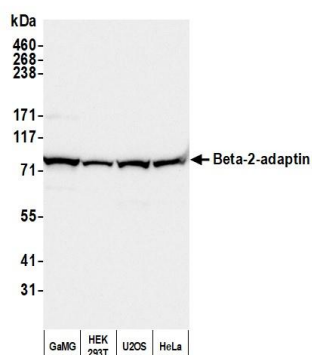
APPLICATIONS	WB, IP
SPECIES REACTIVITY	Human, Mouse
PRESUMED REACTIVITY	Based on 100% sequence identity, this antibody is predicted to react with Rat and Bovine
AMOUNT	10 µl
CONCENTRATION	1000 µg/ml
STORAGE/SHELF LIFE	2 – 8°C / 1 year from date of receipt
PHYSICAL STATE	Liquid
BUFFER	Tris-citrate/phosphate buffer, pH 7 to 8 containing 0.09% Sodium Azide
ISOTYPE	IgG
ORIGIN	USA
PRODUCTION PROCEDURES	Antibody was affinity purified using an epitope specific to Beta-2-adaptin immobilized on solid support.

The epitope recognized by A304-719A-T maps to a region between residue 575 to 625 of human Beta-2-adaptin using the numbering given in entry NP_001273.1 (GeneID 163).

APPLICATIONS	Centrifuge tube to remove product from lid. Optimal working dilutions should be determined experimentally by the investigator. Prepare working dilution immediately before use.
	Western Blot 1:2,000 – 1:10,000
	Immunoprecipitation 2 – 10 µg/mg lysate

ADDITIONAL INFO	https://www.fortislifecom/p/A304-719A-T Use the link above to view SDS, a current list of citations, and other product specific information.
------------------------	---

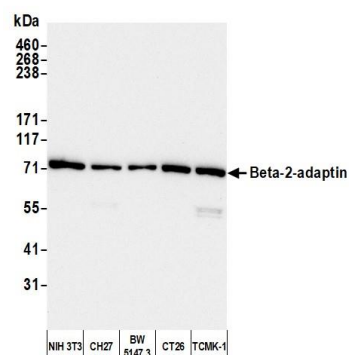
This document certifies that this product has met all of the quality control standards defined by Bethyl Laboratories, Inc.
Michael Spencer, PhD Date: April 14, 2023

**Detection of human Beta-2-adaptin by western blot.**

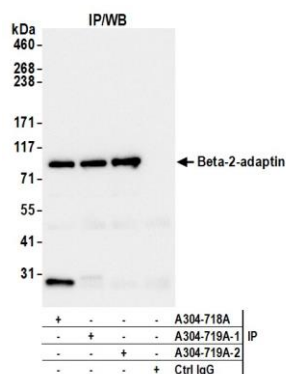
Samples: Whole cell lysate (50 µg) from GaMG, HEK293T, U2OS, and HeLa cells prepared using NETN lysis buffer.

Antibody: Affinity purified rabbit anti-Beta-2-adaptin antibody (A304-719A-2 lot 2) used for WB at 0.1 µg/ml.

Detection: Chemiluminescence with an exposure time of 10 seconds.

**Detection of mouse Beta-2-adaptin by western blot.**

Samples: Whole cell lysate (25 µg) from NIH 3T3, CH27, BW5147.3, CT26, and TCMK-1 cells prepared using NETN lysis buffer. *Antibody:* Affinity purified rabbit anti-Beta-2-adaptin antibody (A304-719A lot 2) used for WB at 0.1 µg/ml. *Detection:* Chemiluminescence with an exposure time of 10 seconds.

**Detection of human Beta-2-adaptin by western blot of immunoprecipitates.**

Samples: Whole cell lysate (1.0 mg per IP reaction; 20% of IP loaded) from HEK293T cells prepared using NETN lysis buffer. *Antibodies:* Affinity purified rabbit anti-Beta-2-adaptin antibody (A304-719A lot 2) used for IP at 6 µg per reaction. Beta-2-adaptin was also immunoprecipitated by a previous lot of this antibody (A304-719A lot 1) and a second antibody against a different epitope of Beta-2-adaptin (A304-718A). For blotting immunoprecipitated Beta-2-adaptin, A304-719A was used at 0.04 µg/ml. *Detection:* Chemiluminescence with an exposure time of 3 seconds.