

# Alpha-adaptin Antibody

Rabbit Polyclonal

Antigen Affinity Purified

Protein ID NP\_055018.2

Catalog No. A304-721A-M

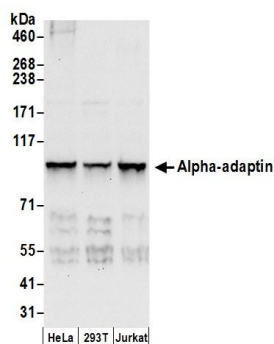
GeneID 160

Lot No. A304-721A-M-1



<b>APPLICATIONS</b>	WB, IP
<b>SPECIES REACTIVITY</b>	Human
<b>AMOUNT</b>	100 µl (10 blots)
<b>CONCENTRATION</b>	100 µg/ml
<b>STORAGE/SHELF LIFE</b>	2 - 8° C / 1 year from date of receipt
<b>PHYSICAL STATE</b>	Liquid
<b>BUFFER</b>	Tris-buffered Saline containing 0.1% BSA and 0.09% Sodium Azide
<b>ISOTYPE</b>	IgG
<b>ORIGIN</b>	USA
<b>PRODUCTION PROCEDURES</b>	Antibody was affinity purified using an epitope specific to Alpha-adaptin immobilized on solid support.  The epitope recognized by A304-721A-M maps to a region between residue 600 to 650 of human Adaptor-Related Protein Complex 2, Alpha 1 Subunit using the numbering given in entry NP_055018.2 (GeneID 160).
<b>APPLICATIONS</b>	Centrifuge tube to remove product from lid. Optimal working dilutions should be determined experimentally by the investigator. Prepare working dilution immediately before use.  Western Blot 1:1000  Immunoprecipitation The antibody contained within A304-721A-M has been qualified for use in immunoprecipitation; however, we recommend using the alternative formulation of this antibody found as product A304-721A.
<b>APPLICATION NOTES</b>	Western blot of immunoprecipitates performed using Normal Pig Serum (Cat. No. S100-020), Goat anti-Rabbit Light Chain HRP Conjugate (Cat. No. A120-113P) and 4-8% SDS-PAGE (link to IP-western blot protocol in Additional Info section below).  Western blot of lysates performed using standard western blot reagents and 4-8% SDS-PAGE.
<b>ADDITIONAL INFO</b>	<a href="https://www.bethyl.com/product/A304-721A-M">https://www.bethyl.com/product/A304-721A-M</a> Use the link above to view SDS, a current list of citations, and other product specific information. IP-western blot protocol: <a href="https://www.bethyl.com/content/protocol_IP_WB">https://www.bethyl.com/content/protocol_IP_WB</a>

This document certifies that this product has met all of the quality control standards defined by Bethyl Laboratories, Inc.  
Eric McIntush, PhD | Chief Scientific Officer Date: June 21, 2019

**Detection of human Alpha-adaptin by western blot.**

*Samples:* Whole cell lysate (50 µg) from HeLa, HEK293T, and Jurkat cells prepared using NETN lysis buffer.

*Antibody:* Affinity purified rabbit anti-Alpha-adaptin antibody A304-721A-M (lot A304-721A-M-1) used for WB at 1:1000. *Detection:* Chemiluminescence with an exposure time of 10 seconds.