

PPME1 /PME-1 Antibody

Rabbit Polyclonal

Antigen Affinity Purified Protein ID Q9Y570.3

Catalog No. A304-762A-T GeneID 51400

Lot No. A304-762A-T-1

APPLICATIONS	WB, IP
SPECIES REACTIVITY	Human, Mouse
PRESUMED REACTIVITY	Based on 100% sequence identity, this antibody is predicted to react with Rat, Bovine and Orangutan
AMOUNT	10 µl
CONCENTRATION	1000 µg/ml
STORAGE/SHELF LIFE	2 - 8°C / 1 year from date of receipt
PHYSICAL STATE	Liquid
BUFFER	Tris-citrate/phosphate buffer, pH 7 to 8 containing 0.09% Sodium Azide
ISOTYPE	IgG
ORIGIN	USA
PRODUCTION PROCEDURES	Antibody was affinity purified using an epitope specific to PPME1 /PME-1 immobilized on solid support.

The epitope recognized by A304-762A-T maps to a region between residue 1 to 50 of human Protein phosphatase methylesterase 1 using the numbering given in entry Q9Y570.3 (GeneID 51400).

APPLICATIONS Centrifuge tube to remove product from lid. Optimal working dilutions should be determined experimentally by the investigator. Prepare working dilution immediately before use.

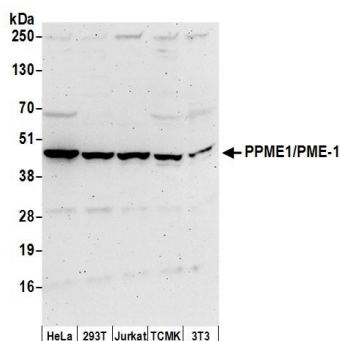
Western Blot 1:2,000 - 1:10,000

Immunoprecipitation 2 - 10 µg/mg lysate

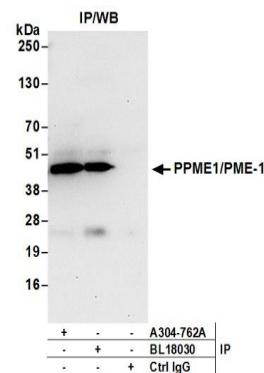
ADDITIONAL INFO <https://www.bethyl.com/product/A304-762A-T>

Use the link above to view SDS, a current list of citations, and other product specific information. IP-western blot protocol: https://www.bethyl.com/content/protocol_IP_WB

This document certifies that this product has met all of the quality control standards defined by Bethyl Laboratories, Inc.
Michael Spencer, PhD Date: June 6, 2022



Detection of human and mouse PPME1/PME-1 by western blot. *Samples:* Whole cell lysate (50 µg) from HeLa, HEK293T, Jurkat, mouse TCMK-1, and mouse NIH 3T3 cells prepared using NETN lysis buffer. *Antibody:* Affinity purified rabbit anti-PPME1/PME-1 antibody A304-762A (lot A304-762A-1) used for WB at 0.1 µg/ml. *Detection:* Chemiluminescence with an exposure time of 3 minutes.



Detection of human PPME1/PME-1 by western blot of immunoprecipitates. *Samples:* Whole cell lysate (0.5 or 1.0 mg per IP reaction; 20% of IP loaded) from Jurkat cells prepared using NETN lysis buffer. *Antibody:* Affinity purified rabbit anti-PPME1/PME-1 antibody A304-762A (lot A304-762A-1) used for IP at 6 µg per reaction. PPME1/PME-1 was also immunoprecipitated by rabbit anti-PPME1/PME-1 antibody BL18030. For blotting immunoprecipitated PPME1/PME-1, A304-762A was used at 1 µg/ml. *Detection:* Chemiluminescence with an exposure time of 30 seconds.