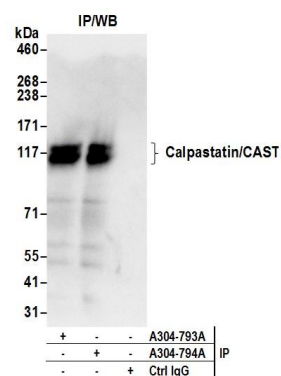


Detection of human Calpastatin/CAST by western blot.

Samples: Whole cell lysate (50 µg) from HeLa and 293T cells prepared using NETN lysis buffer. *Antibody:* Affinity purified rabbit anti-Calpastatin/CAST antibody A304-794A (lot A304-794A-1) used for WB at 0.1 µg/ml. *Detection:* Chemiluminescence with an exposure time of 3 seconds.



Detection of human Calpastatin/CAST by western blot of immunoprecipitates.

Samples: Whole cell lysate (0.5 or 1.0 mg per IP reaction; 20% of IP loaded) from 293T cells prepared using NETN lysis buffer. *Antibodies:* Affinity purified rabbit anti-Calpastatin/CAST antibody A304-794A (lot A304-794A-1) used for IP at 6 µg per reaction. Calpastatin/CAST was also immunoprecipitated by rabbit anti-Calpastatin/CAST antibody A304-793A. For blotting immunoprecipitated Calpastatin/CAST, A304-794A was used at 1 µg/ml. *Detection:* Chemiluminescence with an exposure time of 3 seconds.