

MYCL1 /L-Myc Antibody

Rabbit Polyclonal

Antigen Affinity Purified

Protein ID P12524

Catalog No. A304-796A

GeneID 4610

Lot No. A304-796A-1



APPLICATIONS	IP
SPECIES REACTIVITY	Human
AMOUNT	100 µl
CONCENTRATION	1000 µg/ml
STORAGE/SHELF LIFE	2 - 8° C / 1 year from date of receipt
PHYSICAL STATE	Liquid
BUFFER	Tris-citrate/phosphate buffer, pH 7 to 8 containing 0.09% Sodium Azide
ISOTYPE	IgG
ORIGIN	USA
PRODUCTION PROCEDURES	Antibody was affinity purified using an epitope specific to MYCL1 /L-Myc immobilized on solid support.

The epitope recognized by A304-796A maps to a region between residue 314 to 364 of human V-Myc Avian Myelocytomatosis Viral Oncogene Lung Carcinoma Derived Homolog using the numbering given in entry P12524 (GeneID 4610).

Antibody concentration was determined by extinction coefficient: absorbance at 280 nm of 1.4 equals 1.0 mg of IgG.

APPLICATIONS Centrifuge tube to remove product from lid. Optimal working dilutions should be determined experimentally by the investigator. Prepare working dilution immediately before use.

Western Blot Not recommended. A304-796A has not performed satisfactorily when used for WB of MYCL1 /L-Myc in crude preparations (e.g. whole cell lysate). This antibody can be used for WB of enriched (e.g. immunoprecipitated) sources of MYCL1 /L-Myc.

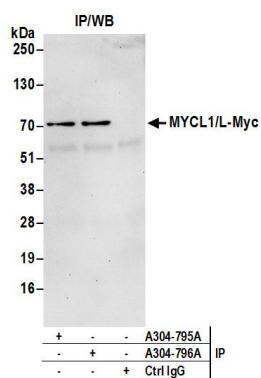
Immunoprecipitation 2 - 10 µg/mg lysate

APPLICATION NOTES Western blot of immunoprecipitates performed using Normal Pig Serum (Cat. No. S100-020), Goat anti-Rabbit Light Chain HRP Conjugate (Cat. No. A120-113P) and 4-20% SDS-PAGE (link to IP-western blot protocol in Additional Info section below).

ADDITIONAL INFO <https://www.bethyl.com/product/A304-796A>

Use the link above to view SDS, a current list of citations, and other product specific information. IP-western blot protocol: https://www.bethyl.com/content/protocol_IP_WB

This document certifies that this product has met all of the quality control standards defined by Bethyl Laboratories, Inc.
Eric McIntush, PhD | Chief Scientific Officer Date: June 21, 2019



Detection of human MYCL1/L-Myc by western blot of immunoprecipitates. *Samples:* Whole cell lysate (0.5 or 1.0 mg per IP reaction; 20% of IP loaded) from 293T cells prepared using NETN lysis buffer. *Antibody:* Affinity purified rabbit anti-MYCL1/L-Myc antibody A304-796A (lot A304-796A-1) used for IP at 6 µg per reaction. MYCL1/L-Myc was also immunoprecipitated by rabbit anti-MYCL1/L-Myc antibody A304-795A. For blotting immunoprecipitated MYCL1/L-Myc, A304-796A was used at 1 µg/ml. *Detection:* Chemiluminescence with an exposure time of 30 seconds.