

VPS26A Antibody

Rabbit Polyclonal

Antigen Affinity Purified

Protein ID O75436.2

Catalog No. A304-801A

GeneID 9559

Lot No. A304-801A-1

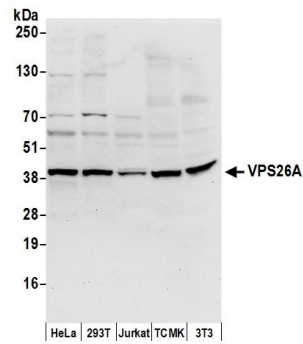


| | | | | | |
|------------------------------|--|--------------|-------------------|---------------------|-----------------|
| APPLICATIONS | WB | | | | |
| SPECIES REACTIVITY | Human, Mouse | | | | |
| PRESUMED REACTIVITY | Based on 100% sequence identity, this antibody is predicted to react with Rat and Bovine | | | | |
| AMOUNT | 100 µl | | | | |
| CONCENTRATION | 1000 µg/ml | | | | |
| STORAGE/SHELF LIFE | 2 - 8° C / 1 year from date of receipt | | | | |
| PHYSICAL STATE | Liquid | | | | |
| BUFFER | Tris-citrate/phosphate buffer, pH 7 to 8 containing 0.09% Sodium Azide | | | | |
| ISOTYPE | IgG | | | | |
| ORIGIN | USA | | | | |
| PRODUCTION PROCEDURES | <p>Antibody was affinity purified using an epitope specific to VPS26A immobilized on solid support.</p> <p>The epitope recognized by A304-801A maps to a region between residue 277 to 327 of human Vacuolar protein sorting-associated protein 26A using the numbering given in entry O75436.2 (GeneID 9559).</p> <p>Antibody concentration was determined by extinction coefficient: absorbance at 280 nm of 1.4 equals 1.0 mg of IgG.</p> | | | | |
| APPLICATIONS | <p>Centrifuge tube to remove product from lid. Optimal working dilutions should be determined experimentally by the investigator. Prepare working dilution immediately before use.</p> <table><tr><td>Western Blot</td><td>1:1,000 - 1:5,000</td></tr><tr><td>Immunoprecipitation</td><td>Not recommended</td></tr></table> | Western Blot | 1:1,000 - 1:5,000 | Immunoprecipitation | Not recommended |
| Western Blot | 1:1,000 - 1:5,000 | | | | |
| Immunoprecipitation | Not recommended | | | | |
| APPLICATION NOTES | Western blot of lysates performed using standard western blot reagents and 4-20% SDS-PAGE. | | | | |
| ADDITIONAL INFO | <p>https://www.bethyl.com/product/A304-801A</p> <p>Use the link above to view SDS, a current list of citations, and other product specific information.</p> | | | | |

This document certifies that this product has met all of the quality control standards defined by Bethyl Laboratories, Inc.

Eric McIntush, PhD | Chief Scientific Officer

Date: June 21, 2019

**Detection of human and mouse VPS26A by western blot.**

Samples: Whole cell lysate (50 µg) from HeLa, HEK293T, Jurkat, mouse TCMK-1, and mouse NIH 3T3 cells prepared using NETN lysis buffer. *Antibody:* Affinity purified rabbit anti-VPS26A antibody A304-801A (lot A304-801A-1) used for WB at 0.4 µg/ml. *Detection:* Chemiluminescence with an exposure time of 10 seconds.