

SPG8/Strumpellin Antibody

Rabbit Polyclonal

Antigen Affinity Purified Protein ID Q12768.1

Catalog No. A304-809A-T GenelD 9897

Lot No. A304-809A-T-1

APPLICATIONS	WB, IP
SPECIES REACTIVITY	Human, Mouse
PRESUMED REACTIVITY	Based on 100% sequence identity, this antibody is predicted to react with Zebrafish and Orangutan
AMOUNT	10 µl
CONCENTRATION	1000 µg/ml
STORAGE/SHELF LIFE	2 - 8°C / 1 year from date of receipt
PHYSICAL STATE	Liquid
BUFFER	Tris-citrate/phosphate buffer, pH 7 to 8 containing 0.09% Sodium Azide
ISOTYPE	IgG
ORIGIN	USA
PRODUCTION PROCEDURES	Antibody was affinity purified using an epitope specific to SPG8/Strumpellin immobilized on solid support.

The epitope recognized by A304-809A-T maps to a region between residue 1109 to 1159 of human WASH complex subunit strumpellin using the numbering given in entry Q12768.1 (GenelD 9897).

APPLICATIONS Centrifuge tube to remove product from lid. Optimal working dilutions should be determined experimentally by the investigator. Prepare working dilution immediately before use.

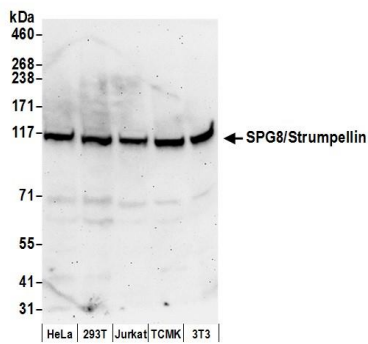
Western Blot 1:2,000 - 1:10,000

Immunoprecipitation 2 - 10 µg/mg lysate

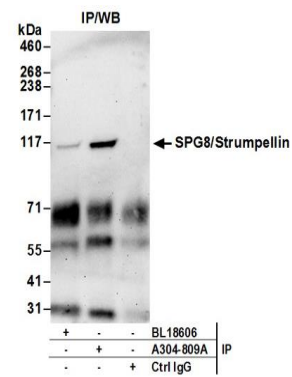
ADDITIONAL INFO <https://www.bethyl.com/product/A304-809A-T>

Use the link above to view SDS, a current list of citations, and other product specific information. IP-western blot protocol: https://www.bethyl.com/content/protocol_IP_WB

This document certifies that this product has met all of the quality control standards defined by Bethyl Laboratories, Inc.
Michael Spencer, PhD Date: June 6, 2022



Detection of human and mouse SPG8/Strumpellin by western blot. *Samples:* Whole cell lysate (50 μ g) from HeLa, HEK293T, Jurkat, mouse TCMK-1, and mouse NIH 3T3 cells prepared using NETN lysis buffer. *Antibody:* Affinity purified rabbit anti-SPG8/Strumpellin antibody A304-809A (lot A304-809A-1) used for WB at 0.1 μ g/ml. *Detection:* Chemiluminescence with an exposure time of 3 minutes.



Detection of human SPG8/Strumpellin by western blot of immunoprecipitates. *Samples:* Whole cell lysate (0.5 or 1.0 mg per IP reaction; 20% of IP loaded) from 293T cells prepared using NETN lysis buffer. *Antibodies:* Affinity purified rabbit anti-SPG8/Strumpellin antibody A304-809A (lot A304-809A-1) used for IP at 6 μ g per reaction. SPG8/Strumpellin was inefficiently immunoprecipitated by rabbit anti-SPG8/Strumpellin antibody BL18606. For blotting immunoprecipitated SPG8/Strumpellin, A304-809A was used at 0.4 μ g/ml. *Detection:* Chemiluminescence with an exposure time of 3 minutes.