

LAP2 alpha beta gamma/TMPO Antibody

Rabbit Polyclonal

Antigen Affinity Purified Protein ID P42166

Catalog No. A304-838A-T GenelD 7112

Lot No. A304-838A-T-1

APPLICATIONS	WB, IP, IHC
SPECIES REACTIVITY	Human, Mouse
PRESUMED REACTIVITY	Based on 100% sequence identity, this antibody is predicted to react with Rat and Bovine
AMOUNT	10 µl
CONCENTRATION	1000 µg/ml
STORAGE/SHELF LIFE	2 – 8°C / 1 year from date of receipt
PHYSICAL STATE	Liquid
BUFFER	Tris-citrate/phosphate buffer, pH 7 to 8 containing 0.09% Sodium Azide
ISOTYPE	IgG
ORIGIN	USA

PRODUCTION PROCEDURES Antibody was affinity purified using an epitope specific to LAP2 alpha beta gamma/TMPO immobilized on solid support.

The epitope recognized by A304-838A-T maps to a region between residue 1 to 50 of human LAP2 alpha beta gamma/TMPO using the numbering given in entry P42166 (GeneID 7112).

APPLICATIONS Centrifuge tube to remove product from lid. Optimal working dilutions should be determined experimentally by the investigator. Prepare working dilution immediately before use.

Western Blot 1:2,000 – 1:10,000

Immunoprecipitation 2 – 10 µg/mg lysate

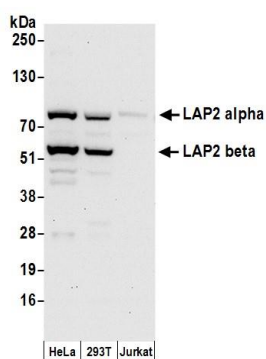
Immunohistochemistry 1:2,000 – 1:10,000. Epitope retrieval with citrate buffer pH 6.0 is recommended for FFPE tissue sections.

ADDITIONAL INFO <https://www.bethyl.com/product/A304-838A-T>

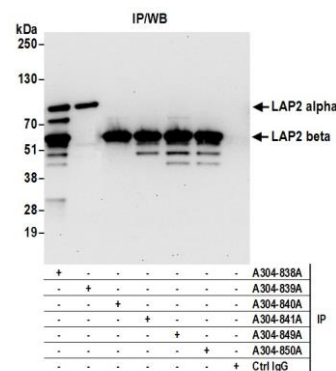
Use the link above to view SDS, a current list of citations, and other product specific information.

IP-western blot protocol: https://www.bethyl.com/content/protocol_IP_WB

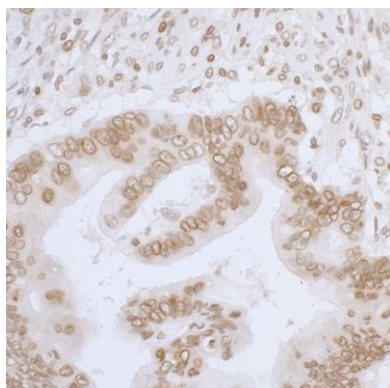
This document certifies that this product has met all of the quality control standards defined by Bethyl Laboratories, Inc.
Michael Spencer, PhD Date: June 6, 2022



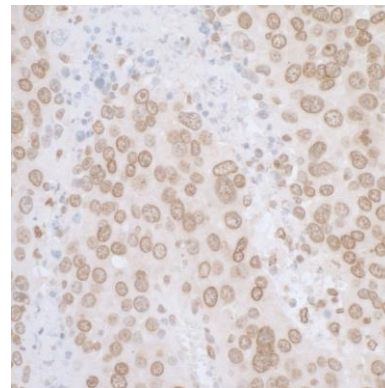
Detection of human LAP2 alpha and LAP2 beta by western blot. *Samples:* Whole cell lysate (50 µg) from HeLa, HEK293T, and Jurkat cells prepared using NETN lysis buffer. *Antibody:* Affinity purified rabbit anti-LAP2 alpha beta gamma antibody A304-838A (lot A304-838A-1) used for WB at 0.1 µg/ml. *Detection:* Chemiluminescence with an exposure time of 30 seconds.



Detection of human LAP2 alpha and beta by western blot of immunoprecipitates. *Samples:* Whole cell lysate (0.5 or 1.0 mg per IP reaction; 20% of IP loaded) from 293T cells prepared using NETN lysis buffer. *Antibodies:* Affinity purified rabbit anti-LAP2 alpha beta gamma antibody A304-838A (lot A304-838A-1) used for IP at 6 µg per reaction. LAP2 alpha was also immunoprecipitated by rabbit anti-LAP2 alpha antibody A304-839A. LAP2 beta was immunoprecipitated by rabbit anti-LAP2 beta antibodies A304-840A and A304-841A, and by rabbit anti-LAP2 beta gamma antibodies A304-849A and A304-850A. For blotting immunoprecipitated LAP2 alpha and beta, A304-838A was used at 1 µg/ml. *Detection:* Chemiluminescence with an exposure time of 30 seconds.



Detection of human LAP2 alpha beta gamma/TMPO by immunohistochemistry. *Sample:* FFPE section of human colon carcinoma. *Antibody:* Affinity purified rabbit anti-LAP2 alpha beta gamma/TMPO (Cat. No. A304-838A Lot1) used at a dilution of 1:5,000 (0.2µg/ml). *Detection:* DAB



Detection of mouse LAP2 alpha beta gamma/TMPO by immunohistochemistry. *Sample:* FFPE section of mouse plasmacytoma. *Antibody:* Affinity purified rabbit anti-LAP2 alpha beta gamma/TMPO (Cat. No. A304-838A Lot1) used at a dilution of 1:5,000 (0.2µg/ml). *Detection:* DAB