

PPP4C Antibody

Rabbit Polyclonal

Antigen Affinity Purified Protein ID NP_002711.1

Catalog No. A304-923A-T GenelD 5531

Lot No. A304-923A-T-1

APPLICATIONS	WB
SPECIES REACTIVITY	Human, Mouse
AMOUNT	10 µl
CONCENTRATION	1000 µg/ml
STORAGE/SHELF LIFE	2 – 8°C / 1 year from date of receipt
PHYSICAL STATE	Liquid
BUFFER	Tris-citrate/phosphate buffer, pH 7 to 8 containing 0.09% Sodium Azide
ISOTYPE	IgG
ORIGIN	USA
PRODUCTION PROCEDURES	Antibody was affinity purified using an epitope specific to PPP4C immobilized on solid support.

The epitope recognized by A304-923A-T maps to a region between residue 1 to 307 of human Protein Phosphatase 4, Catalytic Subunit using the numbering given in entry NP_002711.1 (GeneID 5531).

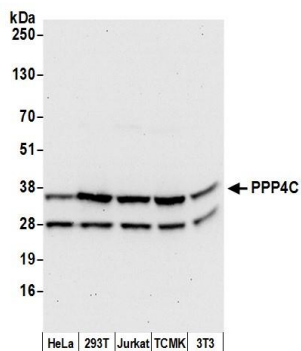
APPLICATIONS Centrifuge tube to remove product from lid. Optimal working dilutions should be determined experimentally by the investigator. Prepare working dilution immediately before use.

Western Blot 1:10,000 – 1:25,000

ADDITIONAL INFO <https://www.bethyl.com/product/A304-923A-T>

Use the link above to view SDS, a current list of citations, and other product specific information. IP-western blot protocol: https://www.bethyl.com/content/protocol_IP_WB

This document certifies that this product has met all of the quality control standards defined by Bethyl Laboratories, Inc.
Michael Spencer, PhD Date: June 6, 2022

**Detection of human and mouse PPP4C by western blot.**

Samples: Whole cell lysate (50 μ g) from HeLa, HEK293T, Jurkat, mouse TCMK-1, and mouse NIH 3T3 cells prepared using NETN lysis buffer. *Antibody:* Affinity purified rabbit anti-PPP4C antibody A304-923A-T (lot A304-923A-T-1) used for WB at 1:1000. *Detection:* Chemiluminescence with an exposure time of 30 seconds.