

# Nucleoredoxin/NXN Antibody

Rabbit Polyclonal

Antigen Affinity Purified Protein ID Q6DKJ4.2

Catalog No. A304-985A-T GeneID 64359

Lot No. A304-985A-T-1

---

<b>APPLICATIONS</b>	WB, IP
<b>SPECIES REACTIVITY</b>	Human, Mouse
<b>PRESUMED REACTIVITY</b>	Based on 100% sequence identity, this antibody is predicted to react with Zebrafish, <i>X. laevis</i> and Bovine
<b>AMOUNT</b>	10 µl
<b>CONCENTRATION</b>	1000 µg/ml
<b>STORAGE/SHELF LIFE</b>	2 – 8°C / 1 year from date of receipt
<b>PHYSICAL STATE</b>	Liquid
<b>BUFFER</b>	Tris-citrate/phosphate buffer, pH 7 to 8 containing 0.09% Sodium Azide
<b>ISOTYPE</b>	IgG
<b>ORIGIN</b>	USA
<b>PRODUCTION PROCEDURES</b>	Antibody was affinity purified using an epitope specific to Nucleoredoxin/NXN immobilized on solid support.

The epitope recognized by A304-985A-T maps to a region between residue 385 to 435 of human Nucleoredoxin using the numbering given in entry Q6DKJ4.2 (GeneID 64359).

**APPLICATIONS** Centrifuge tube to remove product from lid. Optimal working dilutions should be determined experimentally by the investigator. Prepare working dilution immediately before use.

Western Blot 1:2,000 – 1:10,000

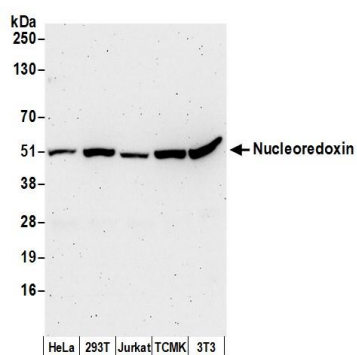
Immunoprecipitation 2 – 10 µg/mg lysate

**ADDITIONAL INFO** <https://www.bethyl.com/product/A304-985A-T>

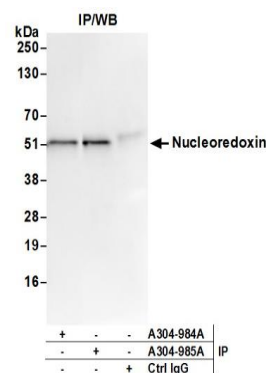
Use the link above to view SDS, a current list of citations, and other product specific information.

IP-western blot protocol: [https://www.bethyl.com/content/protocol\\_IP\\_WB](https://www.bethyl.com/content/protocol_IP_WB)

This document certifies that this product has met all of the quality control standards defined by Bethyl Laboratories, Inc.  
Michael Spencer, PhD Date: June 6, 2022



**Detection of human and mouse Nucleoredoxin by western blot.** *Samples:* Whole cell lysate (50  $\mu$ g) from HeLa, HEK293T, Jurkat, mouse TCMK-1, and mouse NIH 3T3 cells prepared using NETN lysis buffer. *Antibody:* Affinity purified rabbit anti-Nucleoredoxin antibody A304-985A (lot A304-985A-1) used for WB at 0.1  $\mu$ g/ml. *Detection:* Chemiluminescence with an exposure time of 3 minutes.



**Detection of human Nucleoredoxin by western blot of immunoprecipitates.** *Samples:* Whole cell lysate (0.5 or 1.0 mg per IP reaction; 20% of IP loaded) from 293T cells prepared using NETN lysis buffer. *Antibodies:* Affinity purified rabbit anti-Nucleoredoxin antibody A304-985A (lot A304-985A-1) used for IP at 6  $\mu$ g per reaction. Nucleoredoxin was also immunoprecipitated by rabbit anti-Nucleoredoxin antibody A304-984A. For blotting immunoprecipitated Nucleoredoxin, A304-985A was used at 1  $\mu$ g/ml. *Detection:* Chemiluminescence with an exposure time of 75 seconds.