

RPL10A/Ribosomal Protein L10a Antibody

Rabbit Polyclonal

Antigen Affinity Purified

Protein ID P62906.2

Catalog No. A305-062A

GeneID 4736

Lot No. A305-062A-1



APPLICATIONS WB, IP

SPECIES REACTIVITY Human, Mouse

PRESUMED REACTIVITY Based on 100% sequence identity, this antibody is predicted to react with Rat, Zebrafish, X. laevis and Bovine

AMOUNT 100 μ l

CONCENTRATION 1000 μ g/ml

STORAGE/SHELF LIFE 2 – 8° C / 1 year from date of receipt

PHYSICAL STATE Liquid

BUFFER Tris-citrate/phosphate buffer, pH 7 to 8 containing 0.09% Sodium Azide

ISOTYPE IgG

ORIGIN USA

PRODUCTION PROCEDURES Antibody was affinity purified using an epitope specific to RPL10A/Ribosomal Protein L10a immobilized on solid support.

The epitope recognized by A305-062A maps to a region between residue 167 to 217 of human 60S ribosomal protein L10a using the numbering given in entry P62906.2 (GeneID 4736).

Antibody concentration was determined by extinction coefficient: absorbance at 280 nm of 1.4 equals 1.0 mg of IgG.

APPLICATIONS Centrifuge tube to remove product from lid. Optimal working dilutions should be determined experimentally by the investigator. Prepare working dilution immediately before use.

Western Blot 1:2,000 – 1:10,000

Immunoprecipitation 2 – 10 μ g/mg lysate

APPLICATION NOTES Western blot of immunoprecipitates performed using Normal Pig Serum (Cat. No. S100-020), Goat anti-Rabbit Light Chain HRP Conjugate (Cat. No. A120-113P) and 4-20% SDS-PAGE (link to IP-western blot protocol in Additional Info section below).

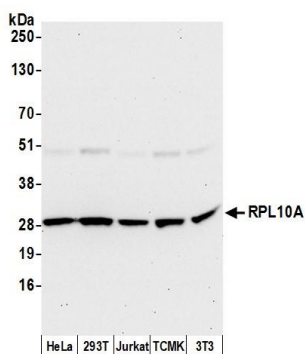
Western blot of lysates performed using standard western blot reagents and 4-20% SDS-PAGE.

ADDITIONAL INFO <https://www.bethyl.com/product/A305-062A>

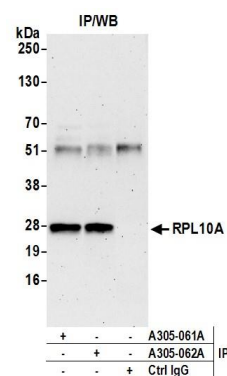
Use the link above to view SDS, a current list of citations, and other product specific information.

IP-western blot protocol: https://www.bethyl.com/content/protocol_IP_WB

This document certifies that this product has met all of the quality control standards defined by Bethyl Laboratories, Inc.
Eric McIntush, PhD | Chief Scientific Officer Date: June 21, 2019



Detection of human and mouse RPL10A by western blot.
Samples: Whole cell lysate (50 µg) from HeLa, HEK293T, Jurkat, mouse TCMK-1, and mouse NIH 3T3 cells prepared using NETN lysis buffer. *Antibody:* Affinity purified rabbit anti-RPL10A antibody A305-062A (lot A305-062A-1) used for WB at 0.1 µg/ml. *Detection:* Chemiluminescence with an exposure time of 30 seconds.



Detection of human RPL10A by western blot of immunoprecipitates.
Samples: Whole cell lysate (0.5 or 1.0 mg per IP reaction; 20% of IP loaded) from 293T cells prepared using NETN lysis buffer. *Antibodies:* Affinity purified rabbit anti-RPL10A antibody A305-062A (lot A305-062A-1) used for IP at 6 µg per reaction. RPL10A was also immunoprecipitated by rabbit anti-RPL10A antibody A305-061A. For blotting immunoprecipitated RPL10A, A305-062A was used at 0.4 µg/ml. *Detection:* Chemiluminescence with an exposure time of 3 minutes.