

# RPL36/Ribosomal Protein L36 Antibody

Rabbit Polyclonal

Antigen Affinity Purified Protein ID Q9Y3U8.3

Catalog No. A305-065A-T GeneID 25873

Lot No. A305-065A-T-1

---

<b>APPLICATIONS</b>	WB
<b>SPECIES REACTIVITY</b>	Human, Mouse
<b>PRESUMED REACTIVITY</b>	Based on 100% sequence identity, this antibody is predicted to react with Rat, Bovine and Orangutan
<b>AMOUNT</b>	10 µl
<b>CONCENTRATION</b>	1000 µg/ml
<b>STORAGE/SHELF LIFE</b>	2 – 8°C / 1 year from date of receipt
<b>PHYSICAL STATE</b>	Liquid
<b>BUFFER</b>	Tris-citrate/phosphate buffer, pH 7 to 8 containing 0.09% Sodium Azide
<b>ISOTYPE</b>	IgG
<b>ORIGIN</b>	USA
<b>PRODUCTION PROCEDURES</b>	Antibody was affinity purified using an epitope specific to RPL36/Ribosomal Protein L36 immobilized on solid support.

The epitope recognized by A305-065A-T maps to a region between residue 1 to 50 of human 60S ribosomal protein L36 using the numbering given in entry Q9Y3U8.3 (GeneID 25873).

**APPLICATIONS** Centrifuge tube to remove product from lid. Optimal working dilutions should be determined experimentally by the investigator. Prepare working dilution immediately before use.

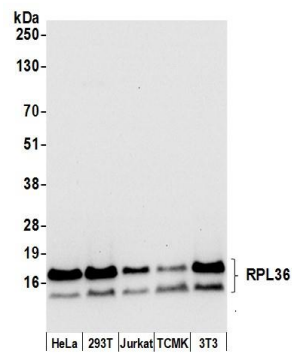
Western Blot 1:10,000 – 1:25,000

Immunoprecipitation Not recommended

**ADDITIONAL INFO** <https://www.bethyl.com/product/A305-065A-T>

Use the link above to view SDS, a current list of citations, and other product specific information.

This document certifies that this product has met all of the quality control standards defined by Bethyl Laboratories, Inc.  
Michael Spencer, PhD Date: June 6, 2022

**Detection of human and mouse RPL36 by western blot.**

*Samples:* Whole cell lysate (50  $\mu$ g) from HeLa, HEK293T, Jurkat, mouse TCMK-1, and mouse NIH 3T3 cells prepared using NETN lysis buffer. *Antibody:* Affinity purified rabbit anti-RPL36 antibody A305-065A (lot A305-065A-1) used for WB at 0.04  $\mu$ g/ml. *Detection:* Chemiluminescence with an exposure time of 10 seconds.