

# RPL36/Ribosomal Protein L36 Antibody

Rabbit Polyclonal

Antigen Affinity Purified Protein ID Q9Y3U8.3

Catalog No. A305-066A-T GenelD 25873

Lot No. A305-066A-T-1

---

<b>APPLICATIONS</b>	WB, IP
<b>SPECIES REACTIVITY</b>	Human, Mouse
<b>PRESUMED REACTIVITY</b>	Based on 100% sequence identity, this antibody is predicted to react with Rat, X. laevis, X. tropicalis, Chicken, Bovine and Orangutan
<b>AMOUNT</b>	10 µl
<b>CONCENTRATION</b>	1000 µg/ml
<b>STORAGE/SHELF LIFE</b>	2 – 8°C / 1 year from date of receipt
<b>PHYSICAL STATE</b>	Liquid
<b>BUFFER</b>	Tris-citrate/phosphate buffer, pH 7 to 8 containing 0.09% Sodium Azide
<b>ISOTYPE</b>	IgG
<b>ORIGIN</b>	USA
<b>PRODUCTION PROCEDURES</b>	Antibody was affinity purified using an epitope specific to RPL36/Ribosomal Protein L36 immobilized on solid support.

The epitope recognized by A305-066A-T maps to a region between residue 55 to 105 of human 60S ribosomal protein L36 using the numbering given in entry Q9Y3U8.3 (GeneID 25873).

**APPLICATIONS** Centrifuge tube to remove product from lid. Optimal working dilutions should be determined experimentally by the investigator. Prepare working dilution immediately before use.

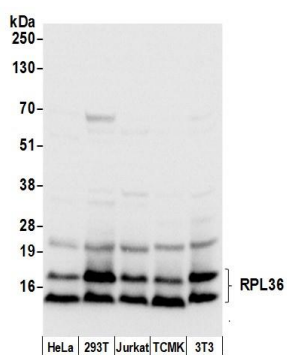
Western Blot 1:10,000 – 1:25,000

Immunoprecipitation 2 – 10 µg/mg lysate

**ADDITIONAL INFO** <https://www.bethyl.com/product/A305-066A-T>

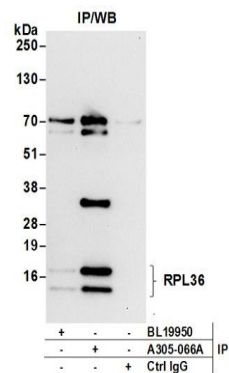
Use the link above to view SDS, a current list of citations, and other product specific information. IP-western blot protocol: [https://www.bethyl.com/content/protocol\\_IP\\_WB](https://www.bethyl.com/content/protocol_IP_WB)

This document certifies that this product has met all of the quality control standards defined by Bethyl Laboratories, Inc.  
Michael Spencer, PhD Date: June 6, 2022



#### Detection of human and mouse RPL36 by western blot.

**Samples:** Whole cell lysate (50 µg) from HeLa, HEK293T, Jurkat, mouse TCMK-1, and mouse NIH 3T3 cells prepared using NETN lysis buffer. **Antibody:** Affinity purified rabbit anti-RPL36 antibody A305-066A (lot A305-066A-1) used for WB at 0.04 µg/ml. **Detection:** Chemiluminescence with an exposure time of 1 second.



#### Detection of human RPL36 by western blot of immunoprecipitates.

**Samples:** Whole cell lysate (0.5 or 1.0 mg per IP reaction; 20% of IP loaded) from 293T cells prepared using NETN lysis buffer. **Antibodies:** Affinity purified rabbit anti-RPL36 antibody A305-066A (lot A305-066A-1) used for IP at 6 µg per reaction. RPL36 was also immunoprecipitated by rabbit anti-RPL36 antibody BL19950. For blotting immunoprecipitated RPL36, A305-066A was used at 1 µg/ml. **Detection:** Chemiluminescence with an exposure time of 10 seconds.