

RPP25 Antibody

Rabbit Polyclonal

Antigen Affinity Purified

Protein ID Q9BUL9.1

Catalog No. A305-093A-T

GeneID 54913

Lot No. A305-093A-T-1

APPLICATIONS	WB, IP
SPECIES REACTIVITY	Human
AMOUNT	10 µl
CONCENTRATION	1000 µg/ml
STORAGE/SHELF LIFE	2 – 8°C / 1 year from date of receipt
PHYSICAL STATE	Liquid
BUFFER	Tris-citrate/phosphate buffer, pH 7 to 8 containing 0.09% Sodium Azide
ISOTYPE	IgG
ORIGIN	USA
PRODUCTION PROCEDURES	Antibody was affinity purified using an epitope specific to RPP25 immobilized on solid support.

The epitope recognized by A305-093A-T maps to a region between residue 149 to 199 of human Ribonuclease P protein subunit p25 using the numbering given in entry Q9BUL9.1 (GeneID 54913).

APPLICATIONS Centrifuge tube to remove product from lid. Optimal working dilutions should be determined experimentally by the investigator. Prepare working dilution immediately before use.

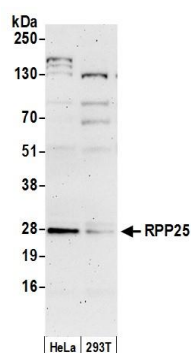
Western Blot 1:2,000 – 1:10,000

Immunoprecipitation 2 – 10 µg/mg lysate

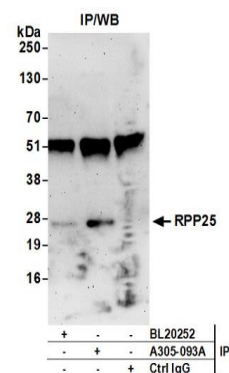
ADDITIONAL INFO <https://www.bethyl.com/product/A305-093A-T>

Use the link above to view SDS, a current list of citations, and other product specific information. IP-western blot protocol: https://www.bethyl.com/content/protocol_IP_WB

This document certifies that this product has met all of the quality control standards defined by Bethyl Laboratories, Inc.
Michael Spencer, PhD Date: June 6, 2022



Detection of human RPP25 by western blot. *Samples:* Whole cell lysate (50 μ g) from HeLa and 293T cells prepared using NETN lysis buffer. *Antibody:* Affinity purified rabbit anti-RPP25 antibody A305-093A (lot A305-093A-1) used for WB at 0.1 μ g/ml. *Detection:* Chemiluminescence with an exposure time of 3 minutes.



Detection of human RPP25 by western blot of immunoprecipitates. *Samples:* Whole cell lysate (0.5 or 1.0 mg per IP reaction; 20% of IP loaded) from HeLa cells prepared using NETN lysis buffer. *Antibodies:* Affinity purified rabbit anti-RPP25 antibody A305-093A (lot A305-093A-1) used for IP at 6 μ g per reaction. RPP25 was also immunoprecipitated by rabbit anti-RPP25 antibody BL20252. For blotting immunoprecipitated RPP25, A305-093A was used at 1 μ g/ml. *Detection:* Chemiluminescence with an exposure time of 3 minutes.