

# ZC3H7B Antibody

Rabbit Polyclonal

Antigen Affinity Purified

Protein ID Q9UGR2.1

Catalog No. A305-134A

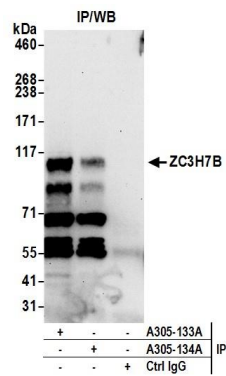
GeneID 23264

Lot No. A305-134A-1



<b>APPLICATIONS</b>	IP
<b>SPECIES REACTIVITY</b>	Human
<b>AMOUNT</b>	100 µl
<b>CONCENTRATION</b>	1000 µg/ml
<b>STORAGE/SHELF LIFE</b>	2 – 8° C / 1 year from date of receipt
<b>PHYSICAL STATE</b>	Liquid
<b>BUFFER</b>	Tris-citrate/phosphate buffer, pH 7 to 8 containing 0.09% Sodium Azide
<b>ISOTYPE</b>	IgG
<b>ORIGIN</b>	USA
<b>PRODUCTION PROCEDURES</b>	<p>Antibody was affinity purified using an epitope specific to ZC3H7B immobilized on solid support.</p> <p>The epitope recognized by A305-134A maps to a region between residue 525 to 575 of human Zinc finger CCCH domain-containing protein 7B using the numbering given in entry Q9UGR2.1 (GeneID 23264).</p> <p>Antibody concentration was determined by extinction coefficient: absorbance at 280 nm of 1.4 equals 1.0 mg of IgG.</p>
<b>APPLICATIONS</b>	<p>Centrifuge tube to remove product from lid. Optimal working dilutions should be determined experimentally by the investigator. Prepare working dilution immediately before use.</p> <p>Western Blot                      Not recommended. Use rabbit anti-ZC3H7B antibody A305-133A.</p> <p>Immunoprecipitation      2 – 10 µg/mg lysate</p>
<b>APPLICATION NOTES</b>	Western blot of immunoprecipitates performed using Normal Pig Serum (Cat. No. S100-020), Goat anti-Rabbit Light Chain HRP Conjugate (Cat. No. A120-113P) and 4-8% SDS-PAGE (link to IP-western blot protocol in Additional Info section below).
<b>ADDITIONAL INFO</b>	<p><a href="https://www.bethyl.com/product/A305-134A">https://www.bethyl.com/product/A305-134A</a></p> <p>Use the link above to view SDS, a current list of citations, and other product specific information. IP-western blot protocol: <a href="https://www.bethyl.com/content/protocol_IP_WB">https://www.bethyl.com/content/protocol_IP_WB</a></p>

This document certifies that this product has met all of the quality control standards defined by Bethyl Laboratories, Inc.  
Eric McIntush, PhD | Chief Scientific Officer Date: June 21, 2019



**Detection of human ZC3H7B by western blot of immunoprecipitates.** *Samples:* Whole cell lysate (0.5 or 1.0 mg per IP reaction; 20% of IP loaded) from HeLa cells prepared using NETN lysis buffer. *Antibodies:* Affinity purified rabbit anti-ZC3H7B antibody A305-134A (lot A305-134A-1) used for IP at 6 µg per reaction. ZC3H7B was also immunoprecipitated by rabbit anti-ZC3H7B antibody A305-133A. For blotting immunoprecipitated ZC3H7B, A305-133A was used at 0.4 µg/ml. *Detection:* Chemiluminescence with an exposure time of 30 seconds.