

CMSS1 /C3orf26 Antibody

Rabbit Polyclonal

Antigen Affinity Purified

Protein ID Q9BQ75.2

Catalog No. A305-154A

GeneID 84319

Lot No. A305-154A-1



APPLICATIONS	IP
SPECIES REACTIVITY	Human
AMOUNT	100 µl
CONCENTRATION	1000 µg/ml
STORAGE/SHELF LIFE	2 – 8° C / 1 year from date of receipt
PHYSICAL STATE	Liquid
BUFFER	Tris-citrate/phosphate buffer, pH 7 to 8 containing 0.09% Sodium Azide
ISOTYPE	IgG
ORIGIN	USA
PRODUCTION PROCEDURES	Antibody was affinity purified using an epitope specific to CMSS1 /C3orf26 immobilized on solid support.

The epitope recognized by A305-154A maps to a region between residue 75 to 125 of human Uncharacterized protein C3orf26 using the numbering given in entry Q9BQ75.2 (GeneID 84319).

Antibody concentration was determined by extinction coefficient: absorbance at 280 nm of 1.4 equals 1.0 mg of IgG.

APPLICATIONS Centrifuge tube to remove product from lid. Optimal working dilutions should be determined experimentally by the investigator. Prepare working dilution immediately before use.

Western Blot Not recommended. A305-154A has not performed satisfactorily when used for WB of CMSS1 in crude preparations (e.g. whole cell lysate). This antibody can be used for WB of enriched (e.g. immunoprecipitated) sources of CMSS1.

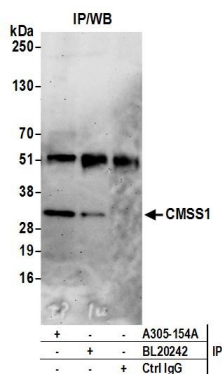
Immunoprecipitation 2 – 10 µg/mg lysate

APPLICATION NOTES Western blot of immunoprecipitates performed using Normal Pig Serum (Cat. No. S100-020), Goat anti-Rabbit Light Chain HRP Conjugate (Cat. No. A120-113P) and 4-20% SDS-PAGE (link to IP-western blot protocol in Additional Info section below).

ADDITIONAL INFO <https://www.bethyl.com/product/A305-154A>

Use the link above to view SDS, a current list of citations, and other product specific information. IP-western blot protocol: https://www.bethyl.com/content/protocol_IP_WB

This document certifies that this product has met all of the quality control standards defined by Bethyl Laboratories, Inc.
Eric McIntush, PhD | Chief Scientific Officer Date: June 21, 2019



Detection of human CMSS1 by western blot of immunoprecipitates. *Samples:* Whole cell lysate (0.5 or 1.0 mg per IP reaction; 20% of IP loaded) from 293T cells prepared using NETN lysis buffer. *Antibodies:* Affinity purified rabbit anti-CMSS1 antibody A305-154A (lot A305-154A-1) used for IP at 6 µg per reaction. CMSS1 was also immunoprecipitated by rabbit anti-CMSS1 antibody BL20242. For blotting immunoprecipitated CMSS1, A305-154A was used at 1 µg/ml. *Detection:* Chemiluminescence with an exposure time of 3 minutes.