

LTBR/Lymphotoxin-beta Receptor Antibody

Rabbit Polyclonal

Antigen Affinity Purified Protein ID P36941.1

Catalog No. A305-161A-T GenelD 4055

Lot No. A305-161A-T-1

APPLICATIONS	WB, IP
SPECIES REACTIVITY	Human
AMOUNT	10 µl
CONCENTRATION	1000 µg/ml
STORAGE/SHELF LIFE	2 – 8°C / 1 year from date of receipt
PHYSICAL STATE	Liquid
BUFFER	Tris-citrate/phosphate buffer, pH 7 to 8 containing 0.09% Sodium Azide
ISOTYPE	IgG
ORIGIN	USA
PRODUCTION PROCEDURES	Antibody was affinity purified using an epitope specific to LTBR/Lymphotoxin-beta Receptor immobilized on solid support.

The epitope recognized by A305-161A-T maps to a region between residue 385 to 435 of human Tumor necrosis factor receptor superfamily member 3 using the numbering given in entry P36941.1 (GeneID 4055).

APPLICATIONS Centrifuge tube to remove product from lid. Optimal working dilutions should be determined experimentally by the investigator. Prepare working dilution immediately before use.

Western Blot 1:2,000 – 1:10,000

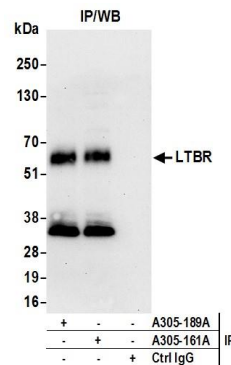
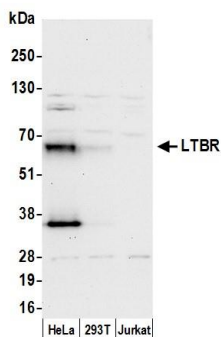
Immunoprecipitation 2 – 10 µg/mg lysate

ADDITIONAL INFO <https://www.bethyl.com/product/A305-161A-T>

Use the link above to view SDS, a current list of citations, and other product specific information.

IP-western blot protocol: https://www.bethyl.com/content/protocol_IP_WB

This document certifies that this product has met all of the quality control standards defined by Bethyl Laboratories, Inc.
Michael Spencer, PhD Date: June 6, 2022



Detection of human LTBR by western blot. *Samples:* Whole cell lysate (50 µg) from HeLa, HEK293T, and Jurkat cells prepared using NETN lysis buffer. *Antibody:* Affinity purified rabbit anti-LTBR antibody A305-161A (lot A305-161A-1) used for WB at 0.1 µg/ml. *Detection:* Chemiluminescence with an exposure time of 30 seconds.

Detection of human LTBR by western blot of immunoprecipitates. *Samples:* Whole cell lysate (0.5 or 1.0 mg per IP reaction; 20% of IP loaded) from HeLa cells prepared using NETN lysis buffer. *Antibodies:* Affinity purified rabbit anti-LTBR antibody A305-161A (lot A305-161A-1) used for IP at 6 µg per reaction. LTBR was also immunoprecipitated by rabbit anti-LTBR antibody A305-189A. For blotting immunoprecipitated LTBR, A305-161A was used at 0.4 µg/ml. *Detection:* Chemiluminescence with an exposure time of 30 seconds.