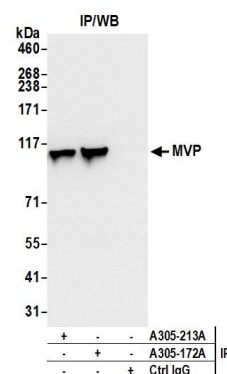
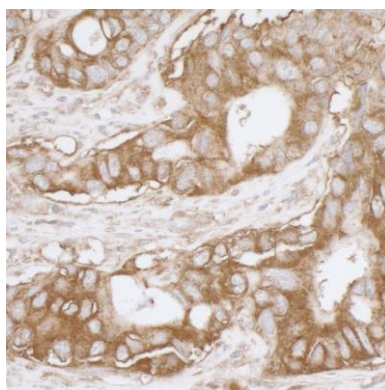


Detection of human MVP by western blot. *Samples:* Whole cell lysate (50 µg) from HeLa, HEK293T, and Jurkat cells prepared using NETN lysis buffer. *Antibody:* Affinity purified rabbit anti-MVP antibody A305-172A (lot A305-172A-1) used for WB at 0.1 µg/ml. *Detection:* Chemiluminescence with an exposure time of 10 seconds.



Detection of human MVP by western blot of immunoprecipitates. *Samples:* Whole cell lysate (0.5 or 1.0 mg per IP reaction; 20% of IP loaded) from HeLa cells prepared using NETN lysis buffer. *Antibodies:* Affinity purified rabbit anti-MVP antibody A305-172A (lot A305-172A-1) used for IP at 6 µg per reaction. MVP was also immunoprecipitated by rabbit anti-MVP antibody A305-213A. For blotting immunoprecipitated MVP, A305-172A was used at 0.4 µg/ml. *Detection:* Chemiluminescence with an exposure time of 1 second.



Detection of human MVP by immunohistochemistry.

Sample: FFPE section of human colon carcinoma. *Antibody:* Affinity purified rabbit anti-MVP (Cat. No. A305-172A Lot1) used at a dilution of 1:5,000 (0.2 µg/ml). *Detection:* DAB