

ACTR2/ARP2 Antibody

Rabbit Polyclonal

Antigen Affinity Purified Protein ID P61160.1

Catalog No. A305-216A-T GenelD 10097

Lot No. A305-216A-T-1

APPLICATIONS	WB, IP, IHC
SPECIES REACTIVITY	Human, Mouse
PRESUMED REACTIVITY	Based on 100% sequence identity, this antibody is predicted to react with Rat, Zebrafish, X. laevis, X. tropicalis, Chicken, Bovine and Orangutan
AMOUNT	10 µl
CONCENTRATION	1000 µg/ml
STORAGE/SHELF LIFE	2 – 8°C / 1 year from date of receipt
PHYSICAL STATE	Liquid
BUFFER	Tris-citrate/phosphate buffer, pH 7 to 8 containing 0.09% Sodium Azide
ISOTYPE	IgG
ORIGIN	USA
PRODUCTION PROCEDURES	Antibody was affinity purified using an epitope specific to ACTR2/ARP2 immobilized on solid support.

The epitope recognized by A305-216A-T maps to a region between residue 25 to 75 of human Actin-related protein 2 using the numbering given in entry P61160.1 (GeneID 10097).

APPLICATIONS Centrifuge tube to remove product from lid. Optimal working dilutions should be determined experimentally by the investigator. Prepare working dilution immediately before use.

Western Blot 1:2,000 – 1:10,000

Immunoprecipitation 2 – 10 µg/mg lysate

Immunohistochemistry 1:1,000 – 1:5,000. Epitope retrieval with citrate buffer pH 6.0 is recommended for FFPE tissue sections.

ADDITIONAL INFO <https://www.bethyl.com/product/A305-216A-T>

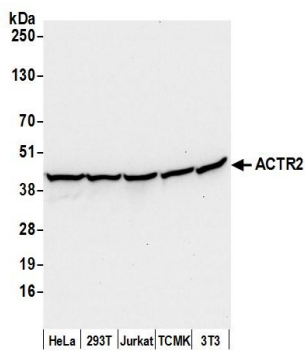
Use the link above to view SDS, a current list of citations, and other product specific information.

IP-western blot protocol: https://www.bethyl.com/content/protocol_IP_WB

This document certifies that this product has met all of the quality control standards defined by Bethyl Laboratories, Inc.

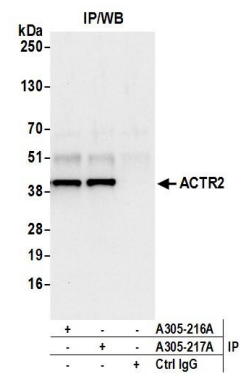
Michael Spencer, PhD

Date: June 6, 2022



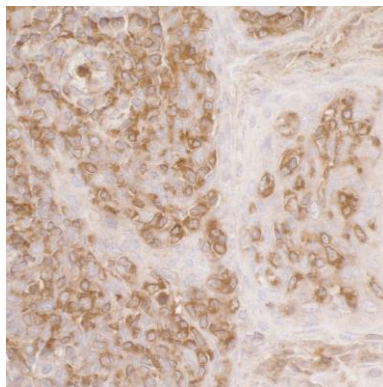
Detection of human and mouse ACTR2 by western blot.

Samples: Whole cell lysate (50 µg) from HeLa, HEK293T, Jurkat, mouse TCMK-1, and mouse NIH 3T3 cells prepared using NETN lysis buffer. **Antibody:** Affinity purified rabbit anti-ACTR2 antibody A305-216A (lot A305-216A-1) used for WB at 0.1 µg/ml. **Detection:** Chemiluminescence with an exposure time of 10 seconds.



Detection of human ACTR2 by western blot of immunoprecipitates.

Samples: Whole cell lysate (0.5 or 1.0 mg per IP reaction; 20% of IP loaded) from 293T cells prepared using NETN lysis buffer. **Antibodies:** Affinity purified rabbit anti-ACTR2 antibody A305-216A (lot A305-216A-1) used for IP at 6 µg per reaction. ACTR2 was also immunoprecipitated by rabbit anti-ACTR2 antibody A305-217A. For blotting immunoprecipitated ACTR2, A305-216A was used at 1 µg/ml. **Detection:** Chemiluminescence with an exposure time of 10 seconds.



Detection of human ACTR2 by immunohistochemistry.

Sample: FFPE section of human skin squamous cell carcinoma. **Antibody:** Affinity purified rabbit anti-ACTR2 (Cat. No. A305-216A Lot1) used at a dilution of 1:5,000 (0.2µg/ml). **Detection:** DAB