

TMED10/TMP21 Antibody

Rabbit Polyclonal

Antigen Affinity Purified Protein ID P49755.2

Catalog No. A305-219A-T GenelD 10972

Lot No. A305-219A-T-1

APPLICATIONS	WB, IP
SPECIES REACTIVITY	Human, Mouse
PRESUMED REACTIVITY	Based on 100% sequence identity, this antibody is predicted to react with Rat, Bovine, Rabbit, Golden hamster and Orangutan
AMOUNT	10 µl
CONCENTRATION	1000 µg/ml
STORAGE/SHELF LIFE	2 – 8°C / 1 year from date of receipt
PHYSICAL STATE	Liquid
BUFFER	Tris-citrate/phosphate buffer, pH 7 to 8 containing 0.09% Sodium Azide
ISOTYPE	IgG
ORIGIN	USA
PRODUCTION PROCEDURES	Antibody was affinity purified using an epitope specific to TMED10/TMP21 immobilized on solid support.

The epitope recognized by A305-219A-T maps to a region between residue 169 to 219 of human Transmembrane emp24 domain-containing protein 10 using the numbering given in entry P49755.2 (GeneID 10972).

APPLICATIONS Centrifuge tube to remove product from lid. Optimal working dilutions should be determined experimentally by the investigator. Prepare working dilution immediately before use.

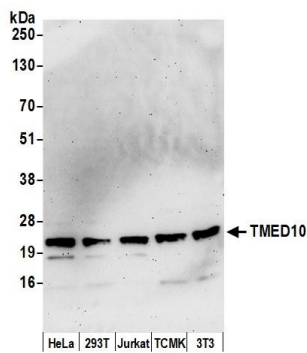
Western Blot 1:2,000 – 1:10,000

Immunoprecipitation 2 – 10 µg/mg lysate

ADDITIONAL INFO <https://www.bethyl.com/product/A305-219A-T>

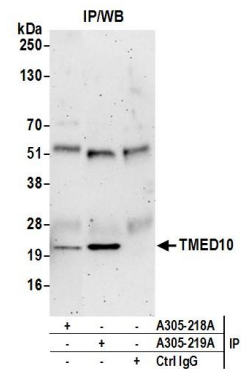
Use the link above to view SDS, a current list of citations, and other product specific information. IP-western blot protocol: https://www.bethyl.com/content/protocol_IP_WB

This document certifies that this product has met all of the quality control standards defined by Bethyl Laboratories, Inc.
Michael Spencer, PhD Date: June 6, 2022



Detection of human and mouse TMED10 by western blot.

Samples: Whole cell lysate (15 µg) from HeLa, HEK293T, Jurkat, mouse TCMK-1, and mouse NIH 3T3 cells prepared using NETN lysis buffer. *Antibody:* Affinity purified rabbit anti-TMED10 antibody A305-219A (lot A305-219A-1) used for WB at 0.1 µg/ml. *Detection:* Chemiluminescence with an exposure time of 3 minutes.



Detection of human TMED10 by western blot of immunoprecipitates.

Samples: Whole cell lysate (0.5 or 1.0 mg per IP reaction; 20% of IP loaded) from 293T cells prepared using NETN lysis buffer. *Antibodies:* Affinity purified rabbit anti-TMED10 antibody A305-219A (lot A305-219A-1) used for IP at 6 µg per reaction. TMED10 was also immunoprecipitated by rabbit anti-TMED10 antibody A305-218A. For blotting immunoprecipitated TMED10, A305-219A was used at 1 µg/ml. *Detection:* Chemiluminescence with an exposure time of 3 minutes.