

APBA2 Antibody

Rabbit Polyclonal

Antigen Affinity Purified

Protein ID Q99767.3

Catalog No. A305-220A-T

GenelD 321

Lot No. A305-220A-T-1

| | |
|------------------------------|---|
| APPLICATIONS | WB, IP |
| SPECIES REACTIVITY | Human |
| AMOUNT | 10 µl |
| CONCENTRATION | 1000 µg/ml |
| STORAGE/SHELF LIFE | 2 – 8°C / 1 year from date of receipt |
| PHYSICAL STATE | Liquid |
| BUFFER | Tris-citrate/phosphate buffer, pH 7 to 8 containing 0.09% Sodium Azide |
| ISOTYPE | IgG |
| ORIGIN | USA |
| PRODUCTION PROCEDURES | Antibody was affinity purified using an epitope specific to APBA2 immobilized on solid support. |

The epitope recognized by A305-220A-T maps to a region between residue 125 to 175 of human Amyloid beta A4 precursor protein-binding family A member 2 using the numbering given in entry Q99767.3 (GenelD 321).

APPLICATIONS Centrifuge tube to remove product from lid. Optimal working dilutions should be determined experimentally by the investigator. Prepare working dilution immediately before use.

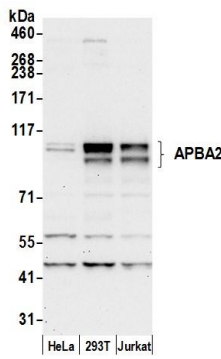
Western Blot 1:2,000 – 1:10,000

Immunoprecipitation 2 – 10 µg/mg lysate

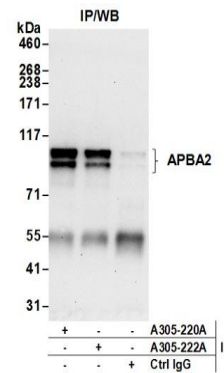
ADDITIONAL INFO <https://www.bethyl.com/product/A305-220A-T>

Use the link above to view SDS, a current list of citations, and other product specific information. IP-western blot protocol: https://www.bethyl.com/content/protocol_IP_WB

This document certifies that this product has met all of the quality control standards defined by Bethyl Laboratories, Inc.
Michael Spencer, PhD Date: June 6, 2022



Detection of human APBA2 by western blot. *Samples:* Whole cell lysate (50 µg) from HeLa, HEK293T, and Jurkat cells prepared using NETN lysis buffer. *Antibody:* Affinity purified rabbit anti-APBA2 antibody A305-220A (lot A305-220A-1) used for WB at 0.1 µg/ml. *Detection:* Chemiluminescence with an exposure time of 30 seconds.



Detection of human APBA2 by western blot of immunoprecipitates. *Samples:* Whole cell lysate (0.5 or 1.0 mg per IP reaction; 20% of IP loaded) from 293T cells prepared using NETN lysis buffer. *Antibodies:* Affinity purified rabbit anti-APBA2 antibody A305-220A (lot A305-220A-1) used for IP at 6 µg per reaction. APBA2 was also immunoprecipitated by rabbit anti-APBA2 antibody A305-222A. For blotting immunoprecipitated APBA2, A305-220A was used at 0.4 µg/ml. *Detection:* Chemiluminescence with an exposure time of 30 seconds.