

GLO1 /Glyoxalase I Antibody

Rabbit Polyclonal

Antigen Affinity Purified

Protein ID Q04760.4

Catalog No. A305-291A

GeneID 2739

Lot No. A305-291A-1



APPLICATIONS WB, IP

SPECIES REACTIVITY Human

AMOUNT 100 µl

CONCENTRATION 1000 µg/ml

STORAGE/SHELF LIFE 2 - 8° C / 1 year from date of receipt

PHYSICAL STATE Liquid

BUFFER Tris-citrate/phosphate buffer, pH 7 to 8 containing 0.09% Sodium Azide

ISOTYPE IgG

ORIGIN USA

PRODUCTION PROCEDURES Antibody was affinity purified using an epitope specific to GLO1 /Glyoxalase I immobilized on solid support.

The epitope recognized by A305-291A maps to a region between residue 134 to 184 of human Lactoylglutathione lyase using the numbering given in entry Q04760.4 (GeneID 2739).

Antibody concentration was determined by extinction coefficient: absorbance at 280 nm of 1.4 equals 1.0 mg of IgG.

APPLICATIONS Centrifuge tube to remove product from lid. Optimal working dilutions should be determined experimentally by the investigator. Prepare working dilution immediately before use.

Western Blot 1:2,000 - 1:10,000

Immunoprecipitation 2 - 10 µg/mg lysate

APPLICATION NOTES Western blot of immunoprecipitates performed using Normal Pig Serum (Cat. No. S100-020), Goat anti-Rabbit Light Chain HRP Conjugate (Cat. No. A120-113P) and 4-20% SDS-PAGE (link to IP-western blot protocol in Additional Info section below).

Western blot of lysates performed using standard western blot reagents and 4-20% SDS-PAGE.

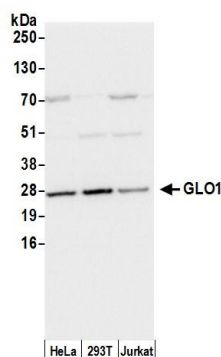
ADDITIONAL INFO

<https://www.bethyl.com/product/A305-291A>

Use the link above to view SDS, a current list of citations, and other product specific information.

IP-western blot protocol: https://www.bethyl.com/content/protocol_IP_WB

This document certifies that this product has met all of the quality control standards defined by Bethyl Laboratories, Inc.
Eric McIntush, PhD | Chief Scientific Officer Date: June 21, 2019

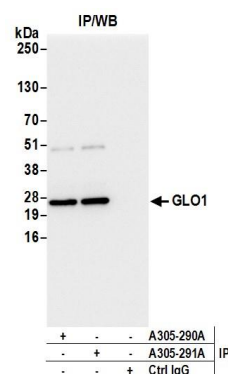


Detection of human GLO1/Glyoxalase I by western blot.

Samples: Whole cell lysate (50 µg) from HeLa, HEK293T, and Jurkat cells prepared using NETN lysis buffer.

Antibody: Affinity purified rabbit anti-GLO1/Glyoxalase I antibody A305-291A (lot A305-291A-1) used for WB at 0.1 µg/ml.

Detection: Chemiluminescence with an exposure time of 1 second.



Detection of human GLO1/Glyoxalase I by western blot of immunoprecipitates.

Samples: Whole cell lysate (0.5 or 1.0 mg per IP reaction; 20% of IP loaded) from 293T cells prepared using NETN lysis buffer.

Antibodies: Affinity purified rabbit anti-GLO1/Glyoxalase I antibody A305-291A (lot A305-291A-1) used for IP at 6 µg per reaction. GLO1/Glyoxalase I was also immunoprecipitated by rabbit anti-GLO1/Glyoxalase I antibody A305-290A. For blotting immunoprecipitated GLO1/Glyoxalase I, A305-291A was used at 0.4 µg/ml.

Detection: Chemiluminescence with an exposure time of 1 second.