

GLO1 /Glyoxalase I Antibody

Rabbit Polyclonal

Antigen Affinity Purified Protein ID Q04760.4

Catalog No. A305-291A-T GenelD 2739

Lot No. A305-291A-T-1

APPLICATIONS WB, IP

SPECIES REACTIVITY Human

AMOUNT 10 µl

CONCENTRATION 1000 µg/ml

STORAGE/SHELF LIFE 2 – 8°C / 1 year from date of receipt

PHYSICAL STATE Liquid

BUFFER Tris-citrate/phosphate buffer, pH 7 to 8 containing 0.09% Sodium Azide

ISOTYPE IgG

ORIGIN USA

PRODUCTION PROCEDURES Antibody was affinity purified using an epitope specific to GLO1 /Glyoxalase I immobilized on solid support.

The epitope recognized by A305-291A-T maps to a region between residue 134 to 184 of human Lactoylglutathione lyase using the numbering given in entry Q04760.4 (GeneID 2739).

APPLICATIONS Centrifuge tube to remove product from lid. Optimal working dilutions should be determined experimentally by the investigator. Prepare working dilution immediately before use.

Western Blot 1:2,000 – 1:10,000

Immunoprecipitation 2 – 10 µg/mg lysate

ADDITIONAL INFO <https://www.bethyl.com/product/A305-291A-T>

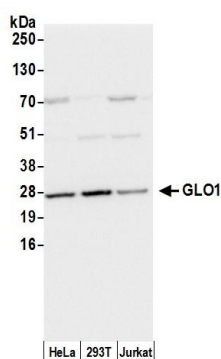
Use the link above to view SDS, a current list of citations, and other product specific information.

IP-western blot protocol: https://www.bethyl.com/content/protocol_IP_WB

This document certifies that this product has met all of the quality control standards defined by Bethyl Laboratories, Inc.

Michael Spencer, PhD

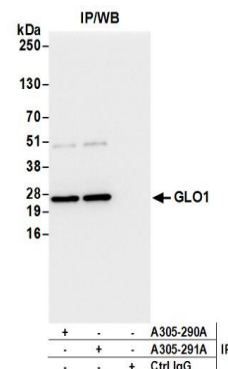
Date: June 6, 2022



Detection of human GLO1/Glyoxalase I by western blot.

Samples: Whole cell lysate (50 µg) from HeLa, HEK293T, and Jurkat cells prepared using NETN lysis buffer.

Antibody: Affinity purified rabbit anti-GLO1/Glyoxalase I antibody A305-291A (lot A305-291A-1) used for WB at 0.1 µg/ml. *Detection:* Chemiluminescence with an exposure time of 1 second.



Detection of human GLO1/Glyoxalase I by western blot of immunoprecipitates.

Samples: Whole cell lysate (0.5 or 1.0 mg per IP reaction; 20% of IP loaded) from 293T cells prepared using NETN lysis buffer. *Antibodies:* Affinity purified rabbit anti-GLO1/Glyoxalase I antibody A305-291A (lot A305-291A-1) used for IP at 6 µg per reaction. GLO1/Glyoxalase I was also immunoprecipitated by rabbit anti-GLO1/Glyoxalase I antibody A305-290A. For blotting immunoprecipitated GLO1/Glyoxalase I, A305-291A was used at 0.4 µg/ml. *Detection:* Chemiluminescence with an exposure time of 1 second.