

CLIC4 Antibody

Rabbit Polyclonal

Antigen Affinity Purified Protein ID Q9Y696.4

Catalog No. A305-372A-T GenelD 25932

Lot No. A305-372A-T-1

APPLICATIONS	WB
SPECIES REACTIVITY	Human, Mouse
PRESUMED REACTIVITY	Based on 100% sequence identity, this antibody is predicted to react with Rat, Bovine and Orangutan
AMOUNT	10 µl
CONCENTRATION	1000 µg/ml
STORAGE/SHELF LIFE	2 - 8°C / 1 year from date of receipt
PHYSICAL STATE	Liquid
BUFFER	Tris-citrate/phosphate buffer, pH 7 to 8 containing 0.09% Sodium Azide
ISOTYPE	IgG
ORIGIN	USA
PRODUCTION PROCEDURES	Antibody was affinity purified using an epitope specific to CLIC4 immobilized on solid support.

The epitope recognized by A305-372A-T maps to a region between residue 203 to 253 of human Chloride intracellular channel protein 4 using the numbering given in entry Q9Y696.4 (GeneID 25932).

APPLICATIONS Centrifuge tube to remove product from lid. Optimal working dilutions should be determined experimentally by the investigator. Prepare working dilution immediately before use.

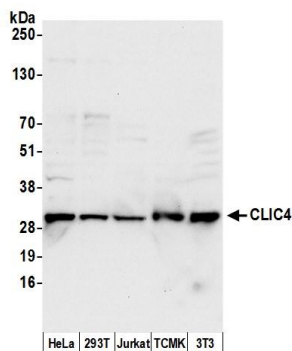
Western Blot 1:2,000 - 1:10,000

Immunoprecipitation Not recommended

ADDITIONAL INFO <https://www.bethyl.com/product/A305-372A-T>

Use the link above to view SDS, a current list of citations, and other product specific information.

This document certifies that this product has met all of the quality control standards defined by Bethyl Laboratories, Inc.
Michael Spencer, PhD Date: June 6, 2022

**Detection of human and mouse CLIC4 by western blot.**

Samples: Whole cell lysate (15 μ g) from HeLa, HEK293T, Jurkat, mouse TCMK-1, and mouse NIH 3T3 cells prepared using NETN lysis buffer. *Antibody:* Affinity purified rabbit anti-CLIC4 antibody A305-372A (lot A305-372A-1) used for WB at 0.1 μ g/ml. *Detection:* Chemiluminescence with an exposure time of 10 seconds.