

DOCK2 Antibody

Rabbit Polyclonal

Antigen Affinity Purified

Protein ID Q92608.2

Catalog No. A305-400A-T

GeneID 1794

Lot No. A305-400A-T-1

| | |
|------------------------------|---|
| APPLICATIONS | WB, IP |
| SPECIES REACTIVITY | Human |
| AMOUNT | 10 µl |
| CONCENTRATION | 1000 µg/ml |
| STORAGE/SHELF LIFE | 2 – 8°C / 1 year from date of receipt |
| PHYSICAL STATE | Liquid |
| BUFFER | Tris-citrate/phosphate buffer, pH 7 to 8 containing 0.09% Sodium Azide |
| ISOTYPE | IgG |
| ORIGIN | USA |
| PRODUCTION PROCEDURES | Antibody was affinity purified using an epitope specific to DOCK2 immobilized on solid support. |

The epitope recognized by A305-400A-T maps to a region between residue 1775 to 1825 of human using the numbering given in entry Q92608.2 (GeneID 1794).

APPLICATIONS Centrifuge tube to remove product from lid. Optimal working dilutions should be determined experimentally by the investigator. Prepare working dilution immediately before use.

Western Blot 1:2,000 – 1:10,000

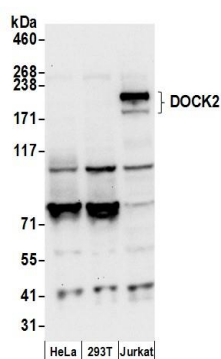
Immunoprecipitation 2 – 10 µg/mg lysate

ADDITIONAL INFO <https://www.bethyl.com/product/A305-400A-T>

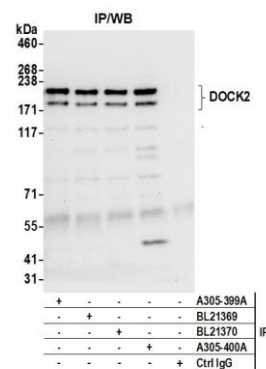
Use the link above to view SDS, a current list of citations, and other product specific information.

IP-western blot protocol: https://www.bethyl.com/content/protocol_IP_WB

This document certifies that this product has met all of the quality control standards defined by Bethyl Laboratories, Inc.
Michael Spencer, PhD Date: June 6, 2022



Detection of human DOCK2 by western blot. *Samples:* Whole cell lysate (50 μ g) from HeLa, HEK293T, and Jurkat cells prepared using NETN lysis buffer. *Antibody:* Affinity purified rabbit anti-DOCK2 antibody A305-400A (lot A305-400A-1) used for WB at 0.1 μ g/ml. *Detection:* Chemiluminescence with an exposure time of 10 seconds.



Detection of human DOCK2 by western blot of immunoprecipitates. *Samples:* Whole cell lysate (0.5 or 1.0 mg per IP reaction; 20% of IP loaded) from Jurkat cells prepared using NETN lysis buffer. *Antibodies:* Affinity purified rabbit anti-DOCK2 antibody A305-400A (lot A305-400A-1) used for IP at 6 μ g per reaction. DOCK2 was also immunoprecipitated by rabbit anti-DOCK2 antibodies A305-399A, BL21369, and BL21370. For blotting immunoprecipitated DOCK2, A305-399A was used at 1 μ g/ml. *Detection:* Chemiluminescence with an exposure time of 10 seconds.